

Datasheet for ABIN7254712
anti-BICD2 antibody



[Go to Product page](#)

2 Images

Overview

Quantity:	200 µL
Target:	BICD2
Reactivity:	Human
Host:	Rabbit
Clonality:	Polyclonal
Conjugate:	This BICD2 antibody is un-conjugated
Application:	ELISA, Immunohistochemistry (IHC)

Product Details

Immunogen:	Synthetic peptide of human BICD2
Isotype:	IgG
Characteristics:	Polyclonal Antibody
Purification:	Antigen affinity purification

Target Details

Target:	BICD2
Alternative Name:	BICD2 (BICD2 Products)
Background:	<p>This gene is one of two human homologs of Drosophila bicaudal-D and a member of the Bicoid family. It has been implicated in dynein-mediated, minus end-directed motility along microtubules. It has also been reported to be a phosphorylation target of NIMA related kinase 8. Two alternative splice variants have been described.</p>

Target Details

UniProt:	Q8TD16
Pathways:	Maintenance of Protein Location

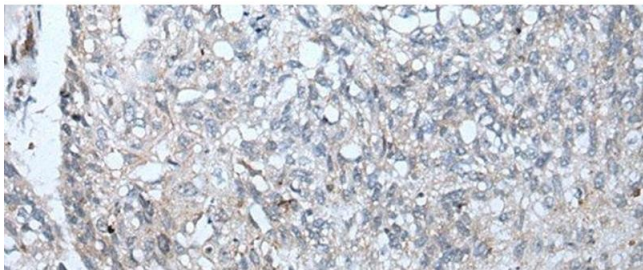
Application Details

Application Notes:	IHC 1:50-1:300, ELISA 1:5000-1:10000
Restrictions:	For Research Use only

Handling

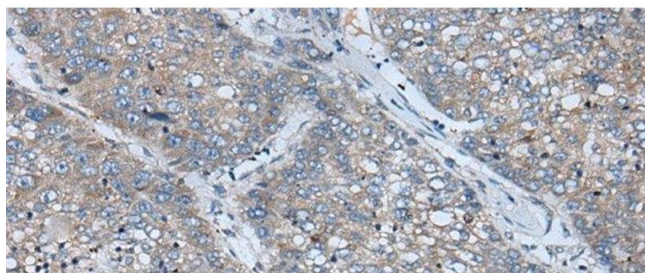
Format:	Liquid
Concentration:	1 mg/mL
Buffer:	PBS with 0.05 % Sodium azide and 40 % Glycerol, pH 7.4
Preservative:	Sodium azide
Precaution of Use:	This product contains Sodium azide: a POISONOUS AND HAZARDOUS SUBSTANCE which should be handled by trained staff only.
Storage:	-20 °C
Storage Comment:	Store at -20°C. Avoid freeze / thaw cycles.

Images



Immunohistochemistry (Paraffin-embedded Sections)

Image 1. Immunohistochemistry of paraffin-embedded Human lung cancer tissue using BICD2 Polyclonal Antibody at dilution of 1:70(x200)



Immunohistochemistry (Paraffin-embedded Sections)

Image 2. Immunohistochemistry of paraffin-embedded Human liver cancer tissue using BICD2 Polyclonal Antibody at dilution of 1:70(x200)