



Datasheet for ABIN7254825 anti-IKKi/IKKe antibody



[Go to Product page](#)

5 Images

Overview

Quantity:	200 µL
Target:	IKKi/IKKe (IKBKE)
Reactivity:	Human, Mouse, Rat
Host:	Rabbit
Clonality:	Polyclonal
Conjugate:	This IKKi/IKKe antibody is un-conjugated
Application:	Western Blotting (WB), Immunohistochemistry (IHC), Immunofluorescence (IF)

Product Details

Immunogen:	Recombinant fusion protein of human IKBKE (NP_054721.1).
Isotype:	IgG
Characteristics:	Polyclonal Antibody
Purification:	Affinity purification

Target Details

Target:	IKKi/IKKe (IKBKE)
Alternative Name:	IKBKE (IKBKE Products)
Background:	IKBKE is a noncanonical I-kappa-B (see MIM 164008) kinase (IKK) that is essential for regulating antiviral signaling pathways. IKBKE has also been identified as a breast cancer (MIM 114480) oncogene and is amplified and overexpressed in over 30 % of breast carcinomas and breast cancer cell lines

Target Details

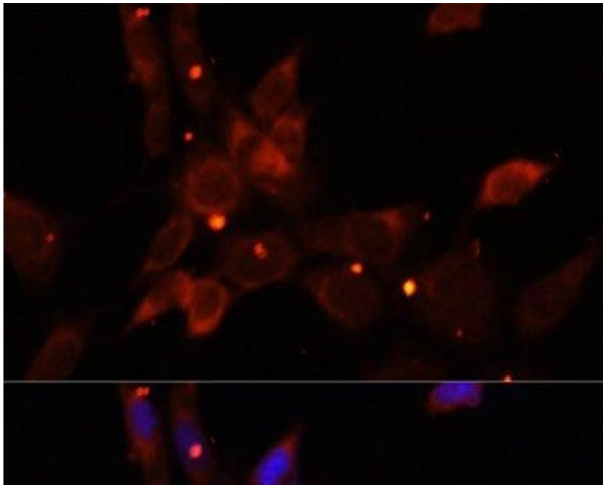
Molecular Weight:	Observed_MW: 93 kDa Calculated_MW: 70 kDa/80 kDa
Gene ID:	9641
UniProt:	Q14164
Pathways:	TLR Signaling , Activation of Innate immune Response , Hepatitis C , Toll-Like Receptors Cascades

Application Details

Application Notes:	WB 1:500-1:2000 IHC 1:50-1:200 IF 1:50-1:200
Restrictions:	For Research Use only

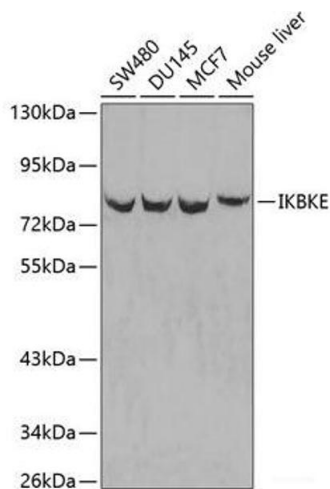
Handling

Format:	Liquid
Concentration:	1 mg/mL
Buffer:	PBS with 0.02 % sodium azide, 50 % glycerol, pH 7.3
Preservative:	Sodium azide
Precaution of Use:	This product contains Sodium azide: a POISONOUS AND HAZARDOUS SUBSTANCE which should be handled by trained staff only.
Storage:	-20 °C
Storage Comment:	Store at -20°C. Avoid freeze / thaw cycles.



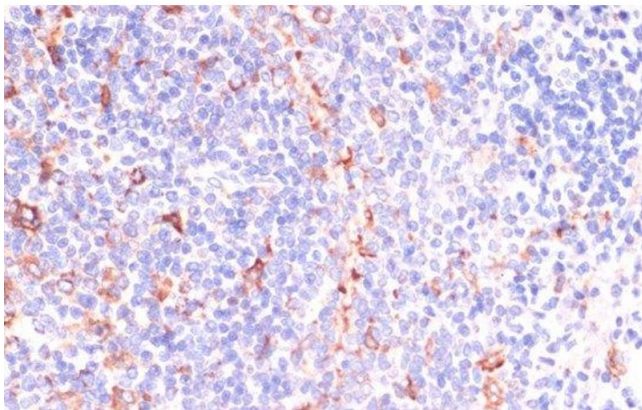
Immunofluorescence

Image 1. Immunofluorescence analysis of NIH/3T3 cells using IKBKE Polyclonal Antibody at dilution of 1:100. Blue: DAPI for nuclear staining.



Western Blotting

Image 2. Western blot analysis of extracts of various cell lines using IKBKE Polyclonal Antibody.



Immunohistochemistry (Paraffin-embedded Sections)

Image 3. Immunohistochemistry of paraffin-embedded Rat spleen using IKBKE Polyclonal Antibody at dilution of 1:200 (40x lens).

Please check the [product details page](#) for more images. Overall 5 images are available for ABIN7254825.