

Datasheet for ABIN7254831

**anti-KRT20 antibody**

## 4 Images

[Go to Product page](#)

## Overview

Quantity:	200 µL
Target:	KRT20
Reactivity:	Human, Mouse
Host:	Rabbit
Clonality:	Polyclonal
Conjugate:	This KRT20 antibody is un-conjugated
Application:	Western Blotting (WB), Immunohistochemistry (IHC), Immunofluorescence (IF)

## Product Details

Immunogen:	Recombinant fusion protein of human KRT20 (NP_061883.1).
Isotype:	IgG
Characteristics:	Polyclonal Antibody
Purification:	Affinity purification

## Target Details

Target:	KRT20
Alternative Name:	KRT20 ( <a href="#">KRT20 Products</a> )
Background:	The protein encoded by this gene is a member of the keratin family. The keratins are intermediate filament proteins responsible for the structural integrity of epithelial cells and are subdivided into cytokeratins and hair keratins. The type I cytokeratins consist of acidic proteins which are arranged in pairs of heterotypic keratin chains. This cytokeratin is a major cellular

## Target Details

protein of mature enterocytes and goblet cells and is specifically expressed in the gastric and intestinal mucosa. The type I cytokeratin genes are clustered in a region of chromosome 17q12-q21.

Molecular Weight: Observed\_MW: 43 kDa  
Calculated\_MW: 48 kDa

Gene ID: 54474

UniProt: [P35900](#)

## Application Details

Application Notes: WB 1:500-1:2000 IHC 1:50-1:200 IF 1:50-1:200

Restrictions: For Research Use only

## Handling

Format: Liquid

Concentration: 1 mg/mL

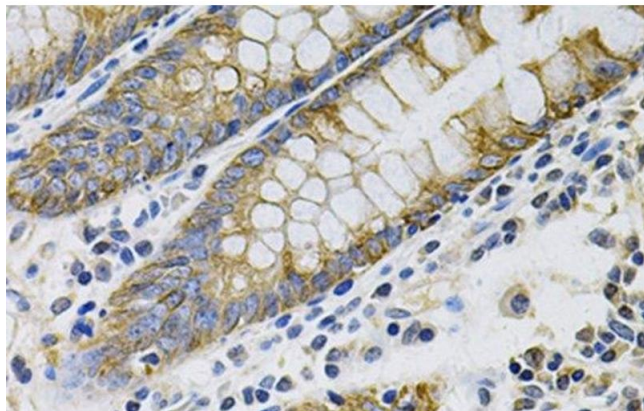
Buffer: PBS with 0.02 % sodium azide, 50 % glycerol, pH 7.3

Preservative: Sodium azide

Precaution of Use: This product contains Sodium azide: a POISONOUS AND HAZARDOUS SUBSTANCE which should be handled by trained staff only.

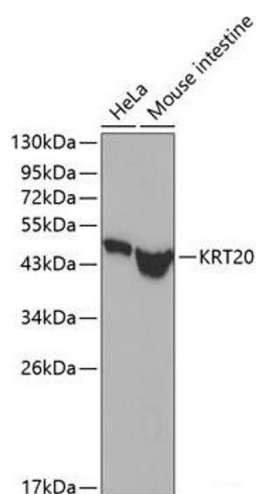
Storage: -20 °C

Storage Comment: Store at -20°C. Avoid freeze / thaw cycles.



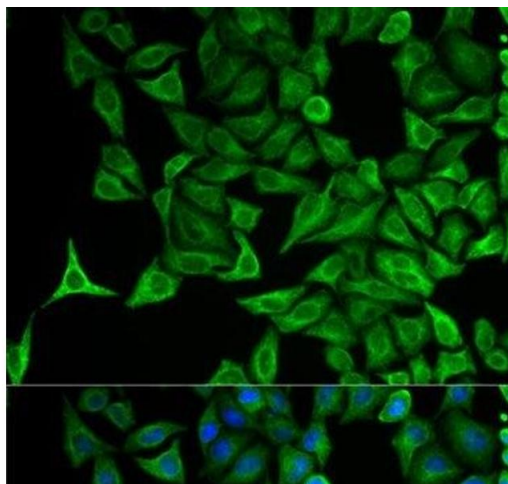
#### Immunohistochemistry (Paraffin-embedded Sections)

**Image 1.** Immunohistochemistry of paraffin-embedded Human colon using KRT20 Polyclonal Antibody at dilution of 1:100 (40x lens).



#### Western Blotting

**Image 2.** Western blot analysis of extracts of various cell lines using KRT20 Polyclonal Antibody.



#### Immunofluorescence

**Image 3.** Immunofluorescence analysis of HeLa cells using KRT20 Polyclonal Antibody

Please check the [product details page](#) for more images. Overall 4 images are available for ABIN7254831.