

Datasheet for ABIN7254833
anti-Lamin A/C antibody

8 Images

[Go to Product page](#)

Overview

Quantity:	200 µL
Target:	Lamin A/C (LMNA)
Reactivity:	Human, Mouse, Rat
Host:	Rabbit
Clonality:	Polyclonal
Conjugate:	This Lamin A/C antibody is un-conjugated
Application:	Western Blotting (WB), Immunohistochemistry (IHC), Immunofluorescence (IF)

Product Details

Immunogen:	Recombinant fusion protein of human Lamin C (NP_005563.1).
Isotype:	IgG
Characteristics:	Polyclonal Antibody
Purification:	Affinity purification

Target Details

Target:	Lamin A/C (LMNA)
Alternative Name:	Lamin A/C (LMNA Products)
Background:	The nuclear lamina consists of a two-dimensional matrix of proteins located next to the inner nuclear membrane. The lamin family of proteins make up the matrix and are highly conserved in evolution. During mitosis, the lamina matrix is reversibly disassembled as the lamin proteins are phosphorylated. Lamin proteins are thought to be involved in nuclear stability, chromatin

Target Details

structure and gene expression. Vertebrate lamins consist of two types, A and B. Alternative splicing results in multiple transcript variants. Mutations in this gene lead to several diseases: Emery-Dreifuss muscular dystrophy, familial partial lipodystrophy, limb girdle muscular dystrophy, dilated cardiomyopathy, Charcot-Marie-Tooth disease, and Hutchinson-Gilford progeria syndrome.

Molecular Weight: Observed_MW: 69 kDa/72 kDa
Calculated_MW: 62-74 kDa

Gene ID: 4000

UniProt: [P02545](#)

Pathways: [Apoptosis](#), [Caspase Cascade in Apoptosis](#), [ER-Nucleus Signaling](#), [Protein targeting to Nucleus](#)

Application Details

Application Notes: WB 1:500-1:2000 IHC 1:50-1:200 IF 1:50-1:200

Restrictions: For Research Use only

Handling

Format: Liquid

Concentration: 1 mg/mL

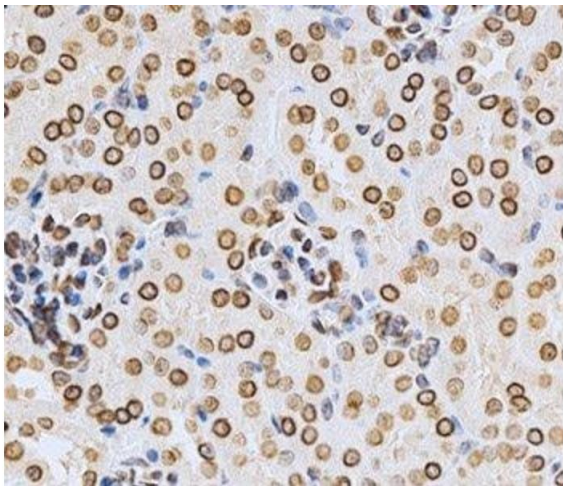
Buffer: PBS with 0.02 % sodium azide, 50 % glycerol, pH 7.3

Preservative: Sodium azide

Precaution of Use: This product contains Sodium azide: a POISONOUS AND HAZARDOUS SUBSTANCE which should be handled by trained staff only.

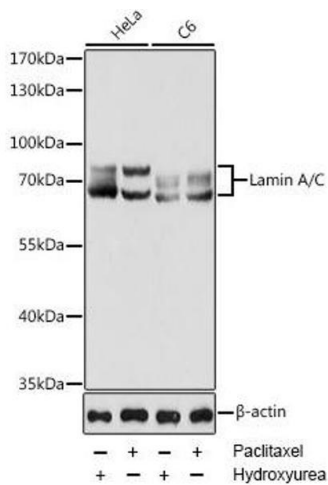
Storage: -20 °C

Storage Comment: Store at -20°C. Avoid freeze / thaw cycles.



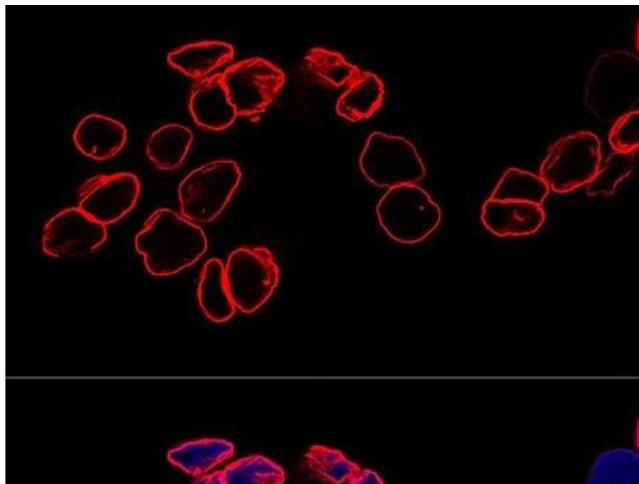
Immunohistochemistry (Paraffin-embedded Sections)

Image 1. Immunohistochemistry of paraffin-embedded Mouse kidney using Lamin A/C Polyclonal Antibody at dilution of 1:200 (40x lens).



Western Blotting

Image 2. Western blot analysis of extracts of various cell lines using Lamin A/C Polyclonal Antibody at dilution of 1:1000. HeLa cells were treated by Hydroxyurea (4 mM) at 37 °C for 20 hours or treated by Paclitaxel (100 nM/mL) at 37 °C for 20 hours. C6 cells were treated by Hydroxyurea (4 mM) at 37 °C for 20 hours or treated by Paclitaxel (100 nM) at 37 °C for 20 hours.



Immunofluorescence

Image 3. Confocal immunofluorescence analysis of A-431 cells using Lamin A/C Polyclonal Antibody at dilution of 1:200. Blue: DAPI for nuclear staining.

Please check the [product details page](#) for more images. Overall 8 images are available for ABIN7254833.