

Datasheet for ABIN7254843

**anti-NME1 antibody**

## 4 Images

[Go to Product page](#)

## Overview

Quantity:	200 µL
Target:	NME1
Reactivity:	Human, Mouse, Rat
Host:	Rabbit
Clonality:	Polyclonal
Conjugate:	This NME1 antibody is un-conjugated
Application:	Immunohistochemistry (IHC), Immunofluorescence (IF)

## Product Details

Immunogen:	A synthetic peptide of human NME1 (NP_000260.1).
Isotype:	IgG
Characteristics:	Polyclonal Antibody
Purification:	Affinity purification

## Target Details

Target:	NME1
Alternative Name:	NME1 ( <a href="#">NME1 Products</a> )
Background:	This gene (NME1) was identified because of its reduced mRNA transcript levels in highly metastatic cells. Nucleoside diphosphate kinase (NDK) exists as a hexamer composed of 'A' (encoded by this gene) and 'B' (encoded by NME2) isoforms. Mutations in this gene have been identified in aggressive neuroblastomas. Two transcript variants encoding different isoforms

## Target Details

have been found for this gene. Co-transcription of this gene and the neighboring downstream gene (NME2) generates naturally-occurring transcripts (NME1-NME2), which encodes a fusion protein comprised of sequence sharing identity with each individual gene product.

Gene ID: 4830

UniProt: [P15531](#)

Pathways: [Apoptosis](#), [Nucleotide Phosphorylation](#), [Carbohydrate Homeostasis](#), [Ribonucleoside Biosynthetic Process](#)

## Application Details

Application Notes: IHC 1:50-1:200 IF 1:50-1:200

Restrictions: For Research Use only

## Handling

Format: Liquid

Concentration: 1 mg/mL

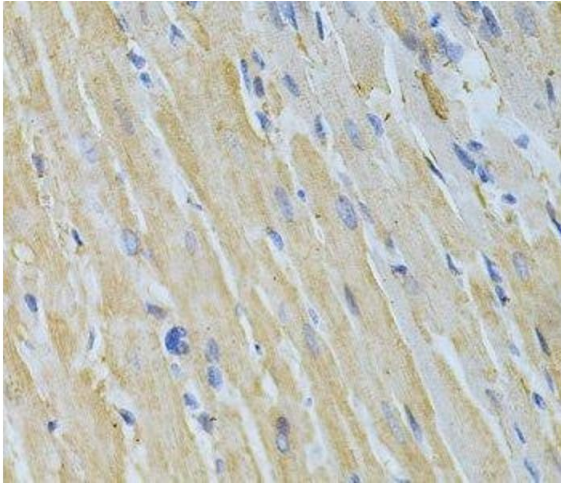
Buffer: PBS with 0.02 % sodium azide, 50 % glycerol, pH 7.3

Preservative: Sodium azide

Precaution of Use: This product contains Sodium azide: a POISONOUS AND HAZARDOUS SUBSTANCE which should be handled by trained staff only.

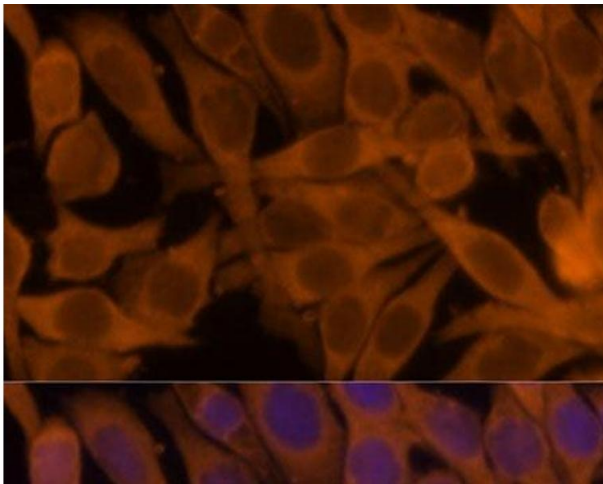
Storage: -20 °C

Storage Comment: Store at -20°C. Avoid freeze / thaw cycles.



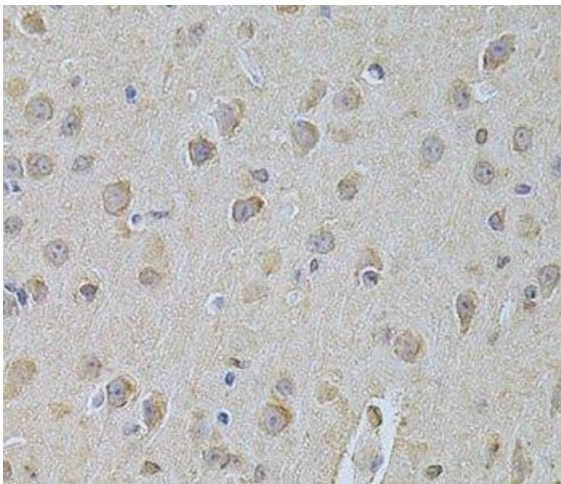
#### Immunohistochemistry (Paraffin-embedded Sections)

**Image 1.** Immunohistochemistry of paraffin-embedded Rat heart using NME1 Polyclonal Antibody at dilution of 1:200 (40x lens).



#### Immunofluorescence

**Image 2.** Immunofluorescence analysis of HeLa cells using NME1 Polyclonal Antibody at dilution of 1:100. Blue: DAPI for nuclear staining.



#### Immunohistochemistry (Paraffin-embedded Sections)

**Image 3.** Immunohistochemistry of paraffin-embedded Mouse brain using NME1 Polyclonal Antibody at dilution of 1:200 (40x lens).

Please check the [product details page](#) for more images. Overall 4 images are available for ABIN7254843.