

Datasheet for ABIN7254859
anti-PKC alpha antibody

4 Images

[Go to Product page](#)

Overview

Quantity:	200 µL
Target:	PKC alpha (PKCa)
Reactivity:	Human, Mouse
Host:	Rabbit
Clonality:	Polyclonal
Conjugate:	This PKC alpha antibody is un-conjugated
Application:	Western Blotting (WB), Immunohistochemistry (IHC), Immunofluorescence (IF)

Product Details

Immunogen:	A synthetic peptide of human PRKCA (NP_002728.1).
Isotype:	IgG
Characteristics:	Polyclonal Antibody
Purification:	Affinity purification

Target Details

Target:	PKC alpha (PKCa)
Alternative Name:	PRKCA (PKCa Products)
Background:	Protein kinase C (PKC) is a family of serine- and threonine-specific protein kinases that can be activated by calcium and the second messenger diacylglycerol. PKC family members phosphorylate a wide variety of protein targets and are known to be involved in diverse cellular signaling pathways. PKC family members also serve as major receptors for phorbol esters, a

Target Details

class of tumor promoters. Each member of the PKC family has a specific expression profile and is believed to play a distinct role in cells. The protein encoded by this gene is one of the PKC family members. This kinase has been reported to play roles in many different cellular processes, such as cell adhesion, cell transformation, cell cycle checkpoint, and cell volume control. Knockout studies in mice suggest that this kinase may be a fundamental regulator of cardiac contractility and Ca(2+) handling in myocytes.

Molecular Weight: Observed_MW: 76 kDa
Calculated_MW: 76 kDa

Gene ID: 5578

UniProt: [P17252](#)

Pathways: [WNT Signaling](#), [TCR Signaling](#), [EGFR Signaling Pathway](#), [Neurotrophin Signaling Pathway](#), [Thyroid Hormone Synthesis](#), [cAMP Metabolic Process](#), [Myometrial Relaxation and Contraction](#), [Cell-Cell Junction Organization](#), [Regulation of G-Protein Coupled Receptor Protein Signaling](#), [G-protein mediated Events](#), [Signaling Events mediated by VEGFR1 and VEGFR2](#), [Interaction of EGFR with phospholipase C-gamma](#), [Thromboxane A2 Receptor Signaling](#), [VEGFR1 Specific Signals](#), [VEGF Signaling](#)

Application Details

Application Notes: WB 1:500-1:2000 IHC 1:50-1:200 IF 1:50-1:200

Restrictions: For Research Use only

Handling

Format: Liquid

Concentration: 1 mg/mL

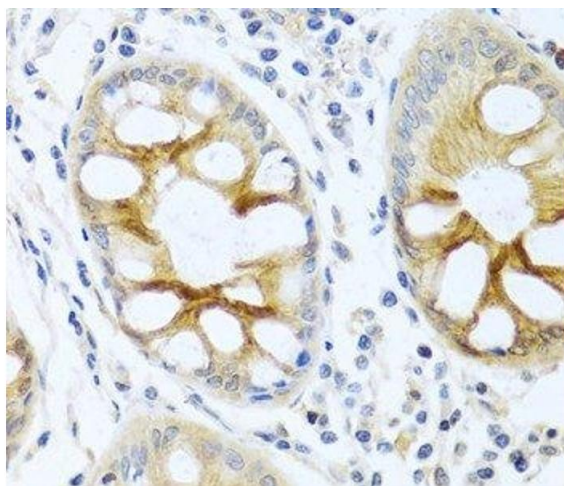
Buffer: PBS with 0.02 % sodium azide, 50 % glycerol, pH 7.3

Preservative: Sodium azide

Precaution of Use: This product contains Sodium azide: a POISONOUS AND HAZARDOUS SUBSTANCE which should be handled by trained staff only.

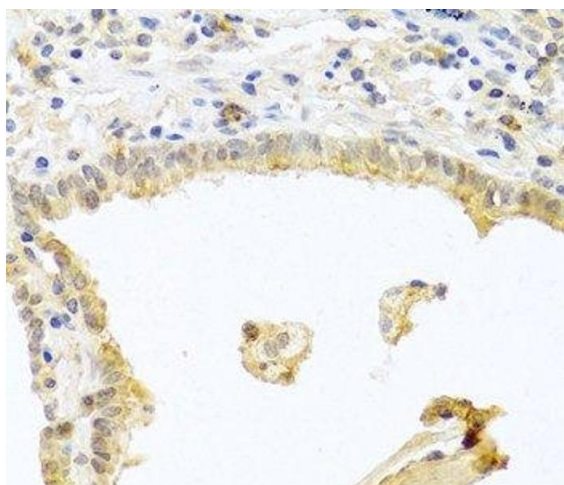
Storage: -20 °C

Storage Comment: Store at -20°C. Avoid freeze / thaw cycles.



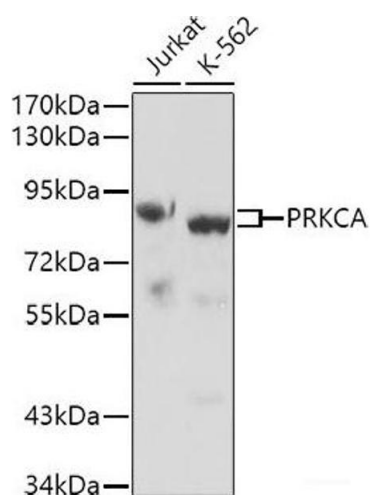
Immunohistochemistry (Paraffin-embedded Sections)

Image 1. Immunohistochemistry of paraffin-embedded Human colon using PRKCA Polyclonal Antibody at dilution of 1:100 (40x lens).



Immunohistochemistry (Paraffin-embedded Sections)

Image 2. Immunohistochemistry of paraffin-embedded Human lung cancer using PRKCA Polyclonal Antibody at dilution of 1:100 (40x lens).



Western Blotting

Image 3. Western blot analysis of extracts of various cell lines using PRKCA Polyclonal Antibody.

Please check the [product details page](#) for more images. Overall 4 images are available for ABIN7254859.