

Datasheet for ABIN7254869

anti-ABL1 antibody

4 Images



[Go to Product page](#)

Overview

Quantity:	200 µL
Target:	ABL1
Reactivity:	Human, Rat
Host:	Rabbit
Clonality:	Polyclonal
Conjugate:	This ABL1 antibody is un-conjugated
Application:	Western Blotting (WB), Immunohistochemistry (IHC), Immunofluorescence (IF)

Product Details

Immunogen:	A synthetic peptide of human ABL1 (NP_005148.2).
Isotype:	IgG
Characteristics:	Polyclonal Antibody
Purification:	Affinity purification

Target Details

Target:	ABL1
Alternative Name:	ABL1 (ABL1 Products)
Background:	This gene is a protooncogene that encodes a protein tyrosine kinase involved in a variety of cellular processes, including cell division, adhesion, differentiation, and response to stress. The activity of the protein is negatively regulated by its SH3 domain, whereby deletion of the region encoding this domain results in an oncogene. The ubiquitously expressed protein has DNA-

Target Details

binding activity that is regulated by CDC2-mediated phosphorylation, suggesting a cell cycle function. This gene has been found fused to a variety of translocation partner genes in various leukemias, most notably the t(9,22) translocation that results in a fusion with the 5' end of the breakpoint cluster region gene (BCR, MIM:151410). Alternative splicing of this gene results in two transcript variants, which contain alternative first exons that are spliced to the remaining common exons.

Molecular Weight:	Observed_MW: 139 kDa Calculated_MW: 122 kDa/124 kDa
-------------------	--

Gene ID:	25
----------	----

UniProt:	P00519
----------	------------------------

Pathways:	Apoptosis , Regulation of Muscle Cell Differentiation , Platelet-derived growth Factor Receptor Signaling , Lipid Metabolism
-----------	--

Application Details

Application Notes:	WB 1:500-1:2000 IHC 1:100-1:200 IF 1:50-1:200
--------------------	---

Restrictions:	For Research Use only
---------------	-----------------------

Handling

Format:	Liquid
---------	--------

Concentration:	1 mg/mL
----------------	---------

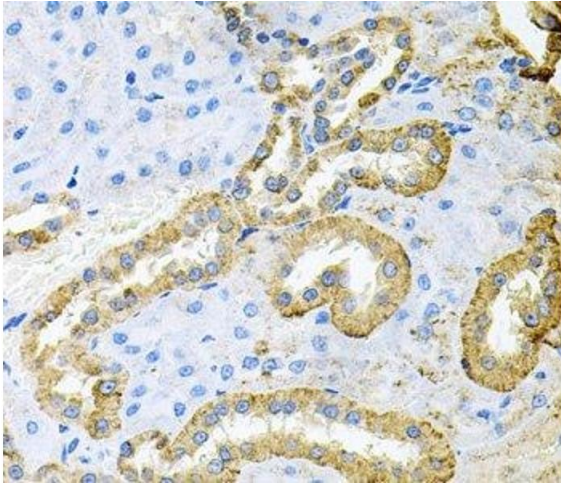
Buffer:	PBS with 0.02 % sodium azide, 50 % glycerol, pH 7.3
---------	---

Preservative:	Sodium azide
---------------	--------------

Precaution of Use:	This product contains Sodium azide: a POISONOUS AND HAZARDOUS SUBSTANCE which should be handled by trained staff only.
--------------------	--

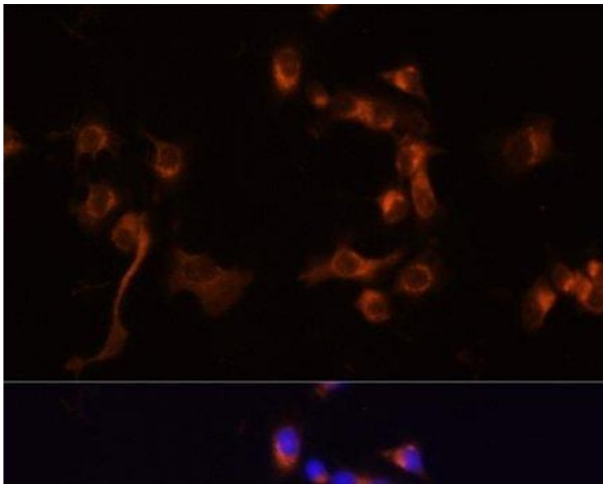
Storage:	-20 °C
----------	--------

Storage Comment:	Store at -20°C. Avoid freeze / thaw cycles.
------------------	---



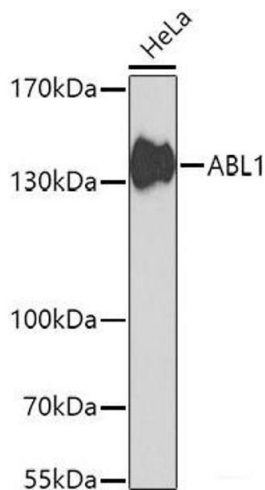
Immunohistochemistry (Paraffin-embedded Sections)

Image 1. Immunohistochemistry of paraffin-embedded Rat kidney using ABL1 Polyclonal Antibody at dilution of 1:100 (40x lens).



Immunofluorescence

Image 2. Immunofluorescence analysis of A431 cells using ABL1 Polyclonal Antibody at dilution of 1:100 (40x lens). Blue: DAPI for nuclear staining.



Western Blotting

Image 3. Western blot analysis of extracts of HeLa cells using ABL1 Polyclonal Antibody at dilution of 1:1000.

Please check the [product details page](#) for more images. Overall 4 images are available for ABIN7254869.