



[Go to Product page](#)

Datasheet for ABIN7254935

## anti-EIF3A antibody

### 3 Images

#### Overview

Quantity:	200 µL
Target:	EIF3A
Reactivity:	Human, Mouse
Host:	Rabbit
Clonality:	Polyclonal
Conjugate:	This EIF3A antibody is un-conjugated
Application:	Western Blotting (WB), Immunohistochemistry (IHC), Immunofluorescence (IF)

#### Product Details

Immunogen:	Recombinant fusion protein of human EIF3A (NP_003741.1).
Isotype:	IgG
Characteristics:	Polyclonal Antibody
Purification:	Affinity purification

#### Target Details

Target:	EIF3A
Alternative Name:	EIF3A ( <a href="#">EIF3A Products</a> )
Background:	RNA-binding component of the eukaryotic translation initiation factor 3 (eIF-3) complex, which is required for several steps in the initiation of protein synthesis . The eIF-3 complex associates with the 40S ribosome and facilitates the recruitment of eIF-1, eIF-1A, eIF-2:GTP:methionyl-tRNAi and eIF-5 to form the 43S pre-initiation complex (43S PIC). The eIF-3 complex stimulates

## Target Details

---

mRNA recruitment to the 43S PIC and scanning of the mRNA for AUG recognition. The eIF-3 complex is also required for disassembly and recycling of post-termination ribosomal complexes and subsequently prevents premature joining of the 40S and 60S ribosomal subunits prior to initiation (PubMed:17581632, PubMed:11169732). The eIF-3 complex specifically targets and initiates translation of a subset of mRNAs involved in cell proliferation, including cell cycling, differentiation and apoptosis, and uses different modes of RNA stem-loop binding to exert either translational activation or repression.

---

Molecular Weight: Observed\_MW: 180 kDa  
Calculated\_MW: 162 kDa/166 kDa

---

Gene ID: 8661

---

UniProt: [Q14152](#)

---

Pathways: [Ribonucleoprotein Complex Subunit Organization](#)

## Application Details

---

---

Application Notes: WB 1:500-1:1000 IHC 1:50-1:100 IF 1:50-1:100

---

Restrictions: For Research Use only

## Handling

---

---

Format: Liquid

---

Concentration: 1 mg/mL

---

Buffer: PBS with 0.02 % sodium azide, 50 % glycerol, pH 7.3

---

Preservative: Sodium azide

---

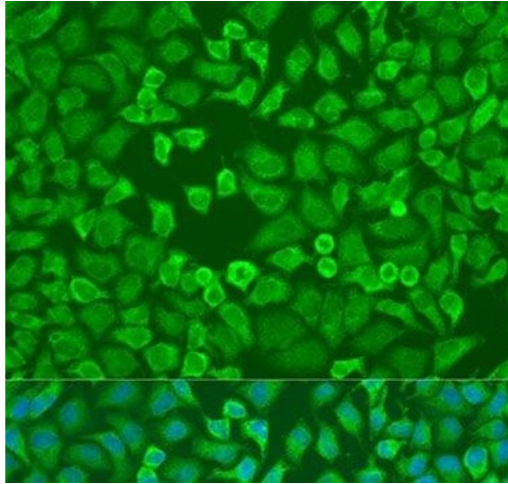
Precaution of Use: This product contains Sodium azide: a POISONOUS AND HAZARDOUS SUBSTANCE which should be handled by trained staff only.

---

Storage: -20 °C

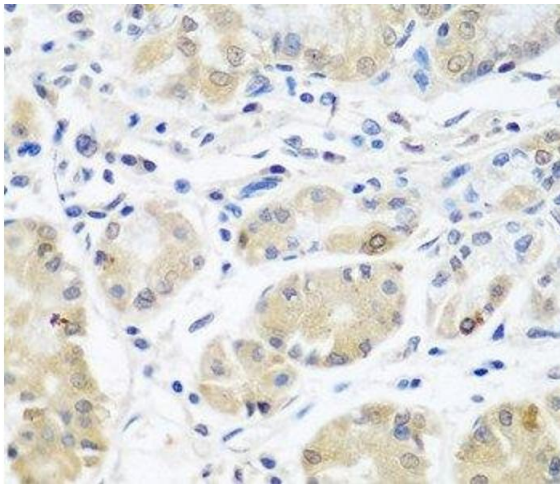
---

Storage Comment: Store at -20°C. Avoid freeze / thaw cycles.



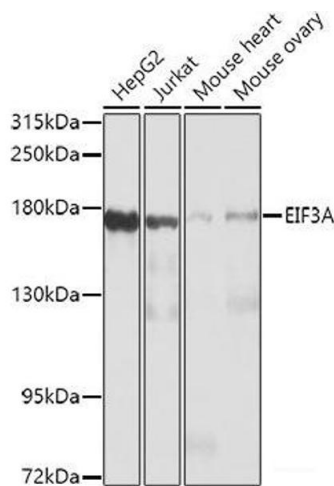
### Immunofluorescence

**Image 1.** Immunofluorescence analysis of U2OS cells using EIF3A Polyclonal Antibody at dilution of 1:100. Blue: DAPI for nuclear staining.



### Immunohistochemistry (Paraffin-embedded Sections)

**Image 2.** Immunohistochemistry of paraffin-embedded Human stomach using EIF3A Polyclonal Antibody at dilution of 1:100 (40x lens).



### Western Blotting

**Image 3.** Western blot analysis of extracts of various cell lines using EIF3A Polyclonal Antibody at dilution of 1:1000.