



Datasheet for ABIN7255027

## anti-CEBPA antibody



[Go to Product page](#)

### 4 Images

#### Overview

Quantity:	200 µL
Target:	CEBPA
Reactivity:	Human, Mouse, Rat
Host:	Rabbit
Clonality:	Polyclonal
Conjugate:	This CEBPA antibody is un-conjugated
Application:	Western Blotting (WB), Immunohistochemistry (IHC)

#### Product Details

Immunogen:	Recombinant fusion protein of human CEBPA (NP_004355.2).
Isotype:	IgG
Characteristics:	Polyclonal Antibody
Purification:	Affinity purification

#### Target Details

Target:	CEBPA
Alternative Name:	CEBPA ( <a href="#">CEBPA Products</a> )
Background:	This intronless gene encodes a transcription factor that contains a basic leucine zipper (bZIP) domain and recognizes the CCAAT motif in the promoters of target genes. The encoded protein functions in homodimers and also heterodimers with CCAAT/enhancer-binding proteins beta and gamma. Activity of this protein can modulate the expression of genes involved in cell cycle

## Target Details

---

regulation as well as in body weight homeostasis. Mutation of this gene is associated with acute myeloid leukemia. The use of alternative in-frame non-AUG (GUG) and AUG start codons results in protein isoforms with different lengths. Differential translation initiation is mediated by an out-of-frame, upstream open reading frame which is located between the GUG and the first AUG start codons.

---

Molecular Weight: Observed\_MW: 41 kDa  
Calculated\_MW: 25 kDa/35 kDa/37 kDa/41 kDa

---

Gene ID: 1050

---

UniProt: [P49715](#)

---

Pathways: [Brown Fat Cell Differentiation](#), [Positive Regulation of fat Cell Differentiation](#)

## Application Details

---

---

Application Notes: WB 1:500-1:2000 IHC 1:50-1:200

---

Restrictions: For Research Use only

## Handling

---

---

Format: Liquid

---

Concentration: 1 mg/mL

---

Buffer: PBS with 0.02 % sodium azide, 50 % glycerol, pH 7.3

---

Preservative: Sodium azide

---

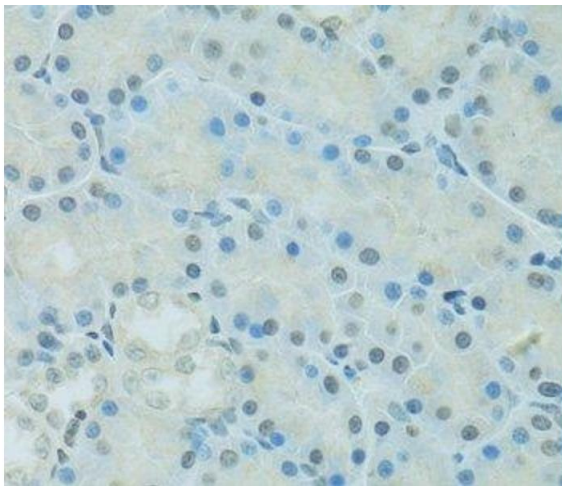
Precaution of Use: This product contains Sodium azide: a POISONOUS AND HAZARDOUS SUBSTANCE which should be handled by trained staff only.

---

Storage: -20 °C

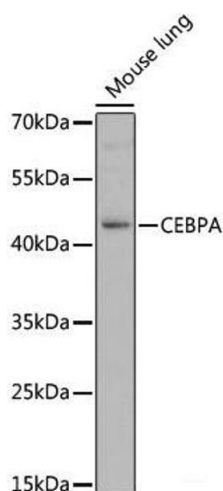
---

Storage Comment: Store at -20°C. Avoid freeze / thaw cycles.



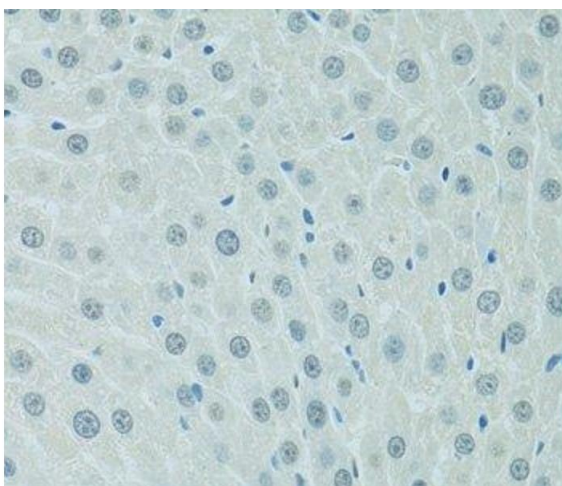
#### Immunohistochemistry (Paraffin-embedded Sections)

**Image 1.** Immunohistochemistry of paraffin-embedded Rat kidney using CEBPA Polyclonal Antibody at dilution of 1:100 (40x lens).



#### Western Blotting

**Image 2.** Western blot analysis of extracts of Mouse lung using CEBPA Polyclonal Antibody at dilution of 1:1000.



#### Immunohistochemistry (Paraffin-embedded Sections)

**Image 3.** Immunohistochemistry of paraffin-embedded Rat liver using CEBPA Polyclonal Antibody at dilution of 1:100 (40x lens).

Please check the [product details page](#) for more images. Overall 4 images are available for ABIN7255027.