



Datasheet for ABIN7255073 anti-MSH6 antibody



[Go to Product page](#)

5 Images

Overview

Quantity:	200 µL
Target:	MSH6
Reactivity:	Human, Mouse, Monkey
Host:	Rabbit
Clonality:	Polyclonal
Conjugate:	This MSH6 antibody is un-conjugated
Application:	Immunohistochemistry (IHC), Immunofluorescence (IF)

Product Details

Immunogen:	Recombinant fusion protein of human MSH6 (NP_000170.1).
Isotype:	IgG
Characteristics:	Polyclonal Antibody
Purification:	Affinity purification

Target Details

Target:	MSH6
Alternative Name:	MSH6 (MSH6 Products)
Background:	This gene encodes a member of the DNA mismatch repair MutS family. In E. coli, the MutS protein helps in the recognition of mismatched nucleotides prior to their repair. A highly conserved region of approximately 150 aa, called the Walker-A adenine nucleotide binding motif, exists in MutS homologs. The encoded protein heterodimerizes with MSH2 to form a

Target Details

mismatch recognition complex that functions as a bidirectional molecular switch that exchanges ADP and ATP as DNA mismatches are bound and dissociated. Mutations in this gene may be associated with hereditary nonpolyposis colon cancer, colorectal cancer, and endometrial cancer. Transcripts variants encoding different isoforms have been described.

Gene ID: 2956

UniProt: [P52701](#)

Pathways: [DNA Damage Repair](#), [Chromatin Binding](#), [Production of Molecular Mediator of Immune Response](#)

Application Details

Application Notes: IHC 1:50-1:200 IF 1:20-1:100

Restrictions: For Research Use only

Handling

Format: Liquid

Concentration: 1 mg/mL

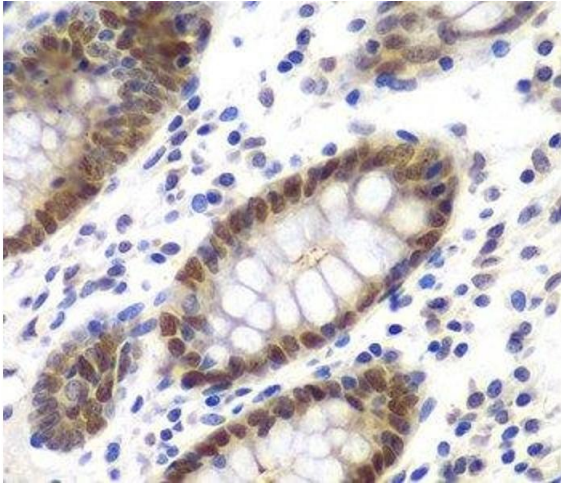
Buffer: PBS with 0.02 % sodium azide, 50 % glycerol, pH 7.3

Preservative: Sodium azide

Precaution of Use: This product contains Sodium azide: a POISONOUS AND HAZARDOUS SUBSTANCE which should be handled by trained staff only.

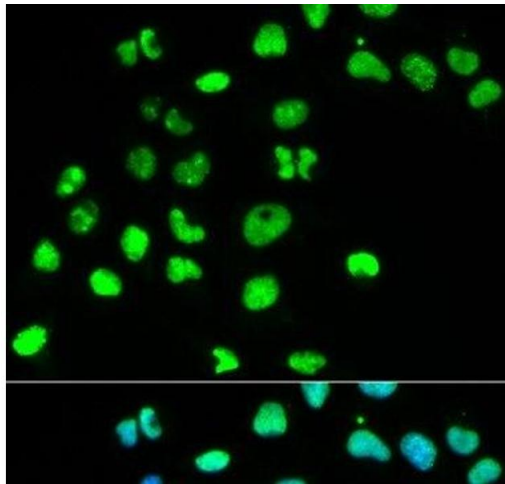
Storage: -20 °C

Storage Comment: Store at -20°C. Avoid freeze / thaw cycles.



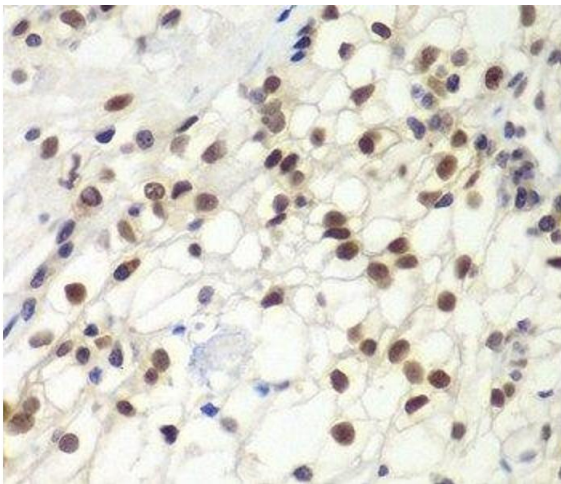
Immunohistochemistry (Paraffin-embedded Sections)

Image 1. Immunohistochemistry of paraffin-embedded Human colon using MSH6 Polyclonal Antibody at dilution of 1:100 (40x lens).



Immunofluorescence

Image 2. Immunofluorescence analysis of HeLa cells using MSH6 Polyclonal Antibody



Immunohistochemistry (Paraffin-embedded Sections)

Image 3. Immunohistochemistry of paraffin-embedded Human kidney cancer using MSH6 Polyclonal Antibody at dilution of 1:100 (40x lens).

Please check the [product details page](#) for more images. Overall 5 images are available for ABIN7255073.