



[Go to Product page](#)

Datasheet for ABIN7255111
anti-MCCC1 antibody

1 Image

Overview

| | |
|--------------|--------------------------------------|
| Quantity: | 200 µL |
| Target: | MCCC1 |
| Reactivity: | Human, Mouse |
| Host: | Rabbit |
| Clonality: | Polyclonal |
| Conjugate: | This MCCC1 antibody is un-conjugated |
| Application: | Western Blotting (WB) |

Product Details

| | |
|------------------|--|
| Immunogen: | Recombinant fusion protein of human MCCC1 (NP_064551.3). |
| Isotype: | IgG |
| Characteristics: | Polyclonal Antibody |
| Purification: | Affinity purification |

Target Details

| | |
|-------------------|---|
| Target: | MCCC1 |
| Alternative Name: | MCCC1 (MCCC1 Products) |
| Background: | This gene encodes the large subunit of 3-methylcrotonyl-CoA carboxylase. This enzyme functions as a heterodimer and catalyzes the carboxylation of 3-methylcrotonyl-CoA to form 3-methylglutaconyl-CoA. Mutations in this gene are associated with 3-Methylcrotonylglycinuria, an autosomal recessive disorder of leucine catabolism. |

Target Details

Molecular Weight: Observed_MW: 80 kDa
Calculated_MW: 80 kDa

Gene ID: 56922

UniProt: [Q96RQ3](#)

Application Details

Application Notes: WB 1:500-1:1000

Restrictions: For Research Use only

Handling

Format: Liquid

Concentration: 1 mg/mL

Buffer: PBS with 0.02 % sodium azide, 50 % glycerol, pH 7.3

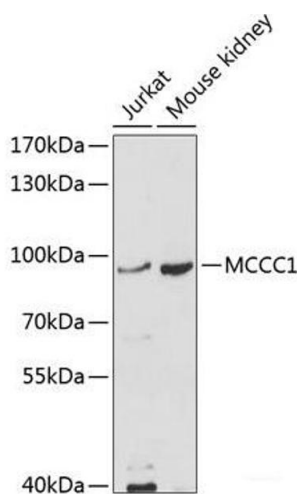
Preservative: Sodium azide

Precaution of Use: This product contains Sodium azide: a POISONOUS AND HAZARDOUS SUBSTANCE which should be handled by trained staff only.

Storage: -20 °C

Storage Comment: Store at -20°C. Avoid freeze / thaw cycles.

Images



Western Blotting

Image 1. Western blot analysis of extracts of various cell lines using MCCC1 Polyclonal Antibody at dilution of 1:1000.