



[Go to Product page](#)

Datasheet for ABIN7255137

anti-ROCK1 antibody

3 Images

Overview

| | |
|--------------|---|
| Quantity: | 200 µL |
| Target: | ROCK1 |
| Reactivity: | Human, Mouse, Rat |
| Host: | Rabbit |
| Clonality: | Polyclonal |
| Conjugate: | This ROCK1 antibody is un-conjugated |
| Application: | Western Blotting (WB), Immunohistochemistry (IHC) |

Product Details

| | |
|------------------|--|
| Immunogen: | Recombinant fusion protein of human ROCK1 (NP_005397.1). |
| Isotype: | IgG |
| Specificity: | This antibody ist KO validated. |
| Characteristics: | Polyclonal Antibody |
| Purification: | Affinity purification |
| Grade: | KO Validated |

Target Details

| | |
|-------------------|--|
| Target: | ROCK1 |
| Alternative Name: | ROCK1 (ROCK1 Products) |
| Background: | This gene encodes a protein serine/threonine kinase that is activated when bound to the GTP- |

Target Details

bound form of Rho. The small GTPase Rho regulates formation of focal adhesions and stress fibers of fibroblasts, as well as adhesion and aggregation of platelets and lymphocytes by shuttling between the inactive GDP-bound form and the active GTP-bound form. Rho is also essential in cytokinesis and plays a role in transcriptional activation by serum response factor. This protein, a downstream effector of Rho, phosphorylates and activates LIM kinase, which in turn, phosphorylates cofilin, inhibiting its actin-depolymerizing activity. A pseudogene, related to this gene, is also located on chromosome 18.

Molecular Weight: Observed_MW: 158 kDa
Calculated_MW: 158 kDa

Gene ID: 6093

UniProt: [Q13464](#)

Pathways: [Microtubule Dynamics](#), [WNT Signaling](#), [M Phase](#), [Maintenance of Protein Location](#), [Signaling Events mediated by VEGFR1 and VEGFR2](#), [Thromboxane A2 Receptor Signaling](#)

Application Details

Application Notes: WB 1:500-1:2000 IHC 1:50-1:100

Restrictions: For Research Use only

Handling

Format: Liquid

Concentration: 1 mg/mL

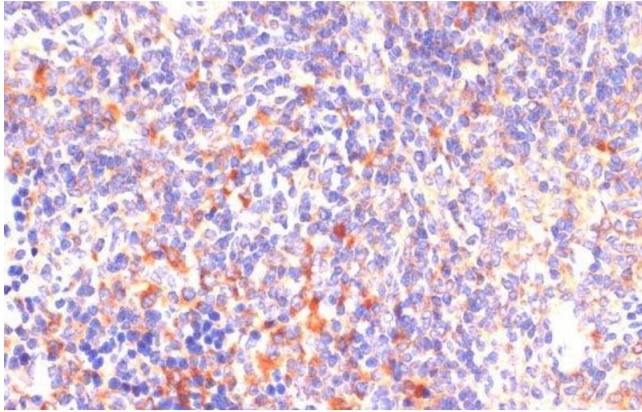
Buffer: PBS with 0.02 % sodium azide, 50 % glycerol, pH 7.3

Preservative: Sodium azide

Precaution of Use: This product contains Sodium azide: a POISONOUS AND HAZARDOUS SUBSTANCE which should be handled by trained staff only.

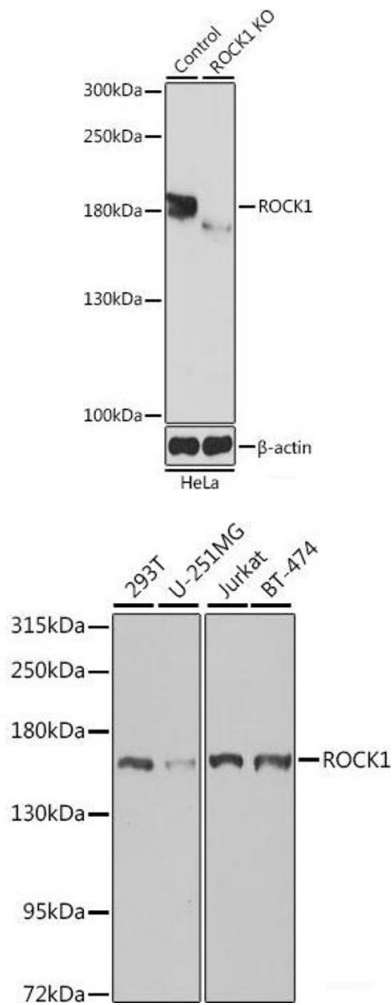
Storage: -20 °C

Storage Comment: Store at -20°C. Avoid freeze / thaw cycles.



Immunohistochemistry (Paraffin-embedded Sections)

Image 1. Immunohistochemistry of paraffin-embedded Mouse spleen using ROCK1 Polyclonal Antibody at dilution of 1:100 (40x lens).



Western Blotting

Image 2. Western blot analysis of extracts from normal (control) and ROCK1 knockout (KO) HeLa cells using ROCK1 Polyclonal Antibody at dilution of 1:1000.

Western Blotting

Image 3. Western blot analysis of extracts of various cell lines using ROCK1 Polyclonal Antibody at dilution of 1:1000.