



[Go to Product page](#)

Datasheet for ABIN7255139

anti-INSRR antibody

1 Image

Overview

Quantity:	200 µL
Target:	INSRR
Reactivity:	Mouse, Rat
Host:	Rabbit
Clonality:	Polyclonal
Conjugate:	This INSRR antibody is un-conjugated
Application:	Western Blotting (WB)

Product Details

Immunogen:	Recombinant fusion protein of human INSRR (NP_055030.1).
Isotype:	IgG
Characteristics:	Polyclonal Antibody
Purification:	Affinity purification

Target Details

Target:	INSRR
Alternative Name:	INSRR (INSRR Products)
Background:	INSRR (Insulin Receptor Related Receptor) is a Protein Coding gene. Diseases associated with INSRR include Uterine Corpus Sarcoma and Rickettsialpox. Among its related pathways are Activation of cAMP-Dependent PKA and Actin Nucleation by ARP-WASP Complex. Gene Ontology (GO) annotations related to this gene include transferase activity, transferring

Target Details

phosphorus-containing groups and protein tyrosine kinase activity. An important paralog of this gene is IGF1R.

Molecular Weight: Observed_MW: 105 kDa
Calculated_MW: 143 kDa

Gene ID: 3645

UniProt: [P14616](#)

Pathways: [RTK Signaling](#)

Application Details

Application Notes: WB 1:500-1:1000

Restrictions: For Research Use only

Handling

Format: Liquid

Concentration: 1 mg/mL

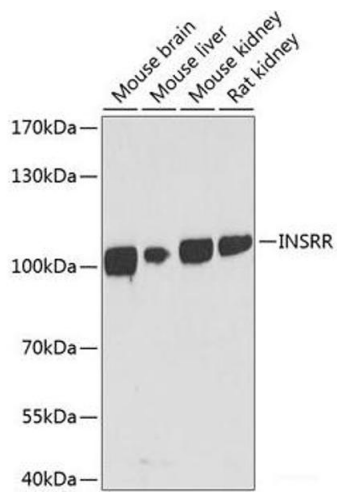
Buffer: PBS with 0.02 % sodium azide, 50 % glycerol, pH 7.3

Preservative: Sodium azide

Precaution of Use: This product contains Sodium azide: a POISONOUS AND HAZARDOUS SUBSTANCE which should be handled by trained staff only.

Storage: -20 °C

Storage Comment: Store at -20°C. Avoid freeze / thaw cycles.



Western Blotting

Image 1. Western blot analysis of extracts of various cell lines using INSRR Polyclonal Antibody at dilution of 1:1000.