

Datasheet for ABIN7255155

anti-ATP4b antibody[Go to Product page](#)**1** Image

Overview

Quantity:	200 µL
Target:	ATP4b
Reactivity:	Human, Mouse, Rat
Host:	Rabbit
Clonality:	Polyclonal
Conjugate:	This ATP4b antibody is un-conjugated
Application:	Immunohistochemistry (IHC)

Product Details

Immunogen:	Recombinant fusion protein of human ATP4B (NP_000696.1).
Isotype:	IgG
Characteristics:	Polyclonal Antibody
Purification:	Affinity purification

Target Details

Target:	ATP4b
Alternative Name:	ATP4B (ATP4b Products)
Background:	<p>The protein encoded by this gene belongs to a family of P-type cation-transporting ATPases. The gastric H⁺, K⁺-ATPase is a heterodimer consisting of a high molecular weight catalytic alpha subunit and a smaller but heavily glycosylated beta subunit. This enzyme is a proton pump that catalyzes the hydrolysis of ATP coupled with the exchange of H⁽⁺⁾ and K⁽⁺⁾ ions</p>

Target Details

across the plasma membrane. It is also responsible for gastric acid secretion. This gene encodes the beta subunit of the gastric H⁺, K⁺-ATPase.

Gene ID: 496

UniProt: [P51164](#)

Pathways: [Proton Transport](#)

Application Details

Application Notes: IHC 1:50-1:200

Restrictions: For Research Use only

Handling

Format: Liquid

Concentration: 1 mg/mL

Buffer: PBS with 0.02 % sodium azide, 50 % glycerol, pH 7.3

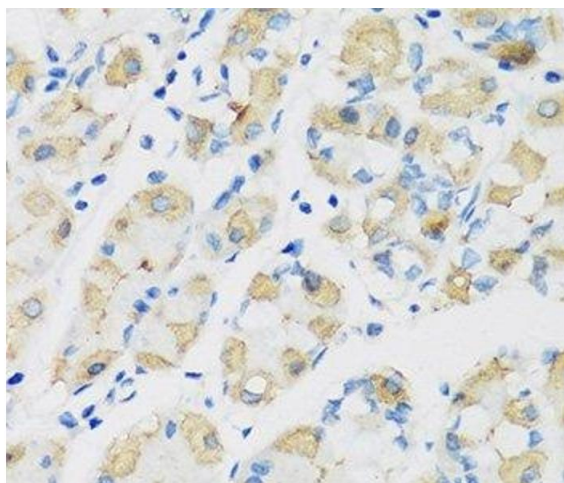
Preservative: Sodium azide

Precaution of Use: This product contains Sodium azide: a POISONOUS AND HAZARDOUS SUBSTANCE which should be handled by trained staff only.

Storage: -20 °C

Storage Comment: Store at -20°C. Avoid freeze / thaw cycles.

Images



Immunohistochemistry (Paraffin-embedded Sections)

Image 1. Immunohistochemistry of paraffin-embedded Human stomach using ATP4B Polyclonal Antibody at dilution of 1:100 (40x lens).