



[Go to Product page](#)

Datasheet for ABIN7255173

anti-BAGE2 antibody

1 Image

Overview

Quantity:	200 µL
Target:	BAGE2
Reactivity:	Human
Host:	Rabbit
Clonality:	Polyclonal
Conjugate:	This BAGE2 antibody is un-conjugated
Application:	Western Blotting (WB)

Product Details

Immunogen:	Recombinant fusion protein of human BAGE2 (NP_872288.2).
Isotype:	IgG
Characteristics:	Polyclonal Antibody
Purification:	Affinity purification

Target Details

Target:	BAGE2
Alternative Name:	BAGE2 (BAGE2 Products)
Background:	BAGE2 (BAGE Family Member 2) is an RNA Gene, and is affiliated with the ncRNA class. Diseases associated with BAGE2 include Melanoma.
Molecular Weight:	Observed_MW: 12 kDa

Target Details

Calculated_MW: 12 kDa

Gene ID: 85319

UniProt: [Q86Y30](#)

Application Details

Application Notes: WB 1:500-1:2000

Restrictions: For Research Use only

Handling

Format: Liquid

Concentration: 1 mg/mL

Buffer: PBS with 0.02 % sodium azide, 50 % glycerol, pH 7.3

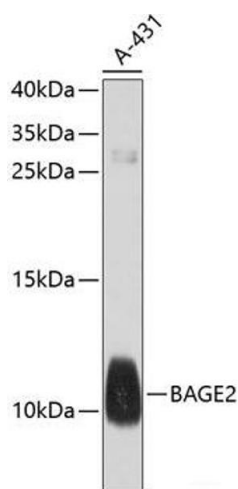
Preservative: Sodium azide

Precaution of Use: This product contains Sodium azide: a POISONOUS AND HAZARDOUS SUBSTANCE which should be handled by trained staff only.

Storage: -20 °C

Storage Comment: Store at -20°C. Avoid freeze / thaw cycles.

Images



Western Blotting

Image 1. Western blot analysis of extracts of A-431 cells using BAGE2 Polyclonal Antibody at dilution of 1:1000.