

Datasheet for ABIN7255177

**anti-PTPRJ antibody**[Go to Product page](#)**1** Image

## Overview

Quantity:	200 µL
Target:	PTPRJ
Reactivity:	Human, Mouse
Host:	Rabbit
Clonality:	Polyclonal
Conjugate:	This PTPRJ antibody is un-conjugated
Application:	Western Blotting (WB)

## Product Details

Immunogen:	Recombinant fusion protein of human PTPRJ (NP_002834.3).
Isotype:	IgG
Characteristics:	Polyclonal Antibody
Purification:	Affinity purification

## Target Details

Target:	PTPRJ
Alternative Name:	PTPRJ ( <a href="#">PTPRJ Products</a> )
Background:	The protein encoded by this gene is a member of the protein tyrosine phosphatase (PTP) family. PTPs are known to be signaling molecules that regulate a variety of cellular processes, including cell growth, differentiation, mitotic cycle, and oncogenic transformation. This PTP possesses an extracellular region containing five fibronectin type III repeats, a single

## Target Details

transmembrane region, and a single intracytoplasmic catalytic domain, and thus represents a receptor-type PTP. This protein is present in all hematopoietic lineages, and was shown to negatively regulate T cell receptor signaling possibly through interfering with the phosphorylation of Phospholipase C Gamma 1 and Linker for Activation of T Cells. This protein can also dephosphorylate the PDGF beta receptor, and may be involved in UV-induced signal transduction. Multiple transcript variants encoding different isoforms have been found for this gene.

Molecular Weight: Observed\_MW: 260 kDa  
Calculated\_MW: 57 kDa/145 kDa

Gene ID: 5795

UniProt: [Q12913](#)

Pathways: [EGFR Signaling Pathway](#), [Platelet-derived growth Factor Receptor Signaling](#)

## Application Details

Application Notes: WB 1:200-1:1000

Restrictions: For Research Use only

## Handling

Format: Liquid

Concentration: 1 mg/mL

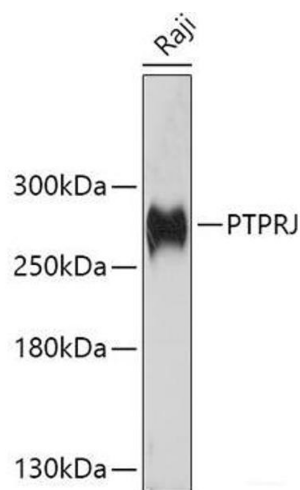
Buffer: PBS with 0.02 % sodium azide, 50 % glycerol, pH 7.3

Preservative: Sodium azide

Precaution of Use: This product contains Sodium azide: a POISONOUS AND HAZARDOUS SUBSTANCE which should be handled by trained staff only.

Storage: -20 °C

Storage Comment: Store at -20°C. Avoid freeze / thaw cycles.



Western Blotting

**Image 1.** Western blot analysis of extracts of Raji cells using PTPRJ Polyclonal Antibody at dilution of 1:1000.