

Datasheet for ABIN7255183  
**anti-Cnpase antibody**



[Go to Product page](#)

3 Images

## Overview

Quantity:	200 µL
Target:	Cnpase (CNP)
Reactivity:	Human, Mouse, Rat
Host:	Rabbit
Clonality:	Polyclonal
Conjugate:	This Cnpase antibody is un-conjugated
Application:	Western Blotting (WB), Immunohistochemistry (IHC)

## Product Details

Immunogen:	Recombinant fusion protein of human CNP (NP_149124.3).
Isotype:	IgG
Characteristics:	Polyclonal Antibody
Purification:	Affinity purification

## Target Details

Target:	Cnpase (CNP)
Alternative Name:	CNP ( <a href="#">CNP Products</a> )
Background:	CNP (2',3'-Cyclic Nucleotide 3' Phosphodiesterase) is a Protein Coding gene. Diseases associated with CNP include Myopia 2, Autosomal Dominant and Isolated Optic Neuritis. Among its related pathways are Neuroscience and MECP2 and Associated Rett Syndrome. Gene Ontology (GO) annotations related to this gene include RNA binding and cyclic nucleotide

## Target Details

	binding.
Molecular Weight:	Observed_MW: 48 kDa Calculated_MW: 45 kDa/47 kDa
Gene ID:	1267
UniProt:	<a href="#">P09543</a>

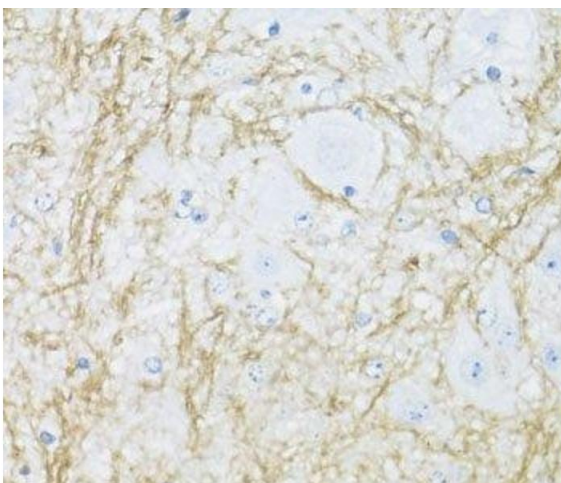
## Application Details

Application Notes:	WB 1:500-1:2000 IHC 1:50-1:200
Restrictions:	For Research Use only

## Handling

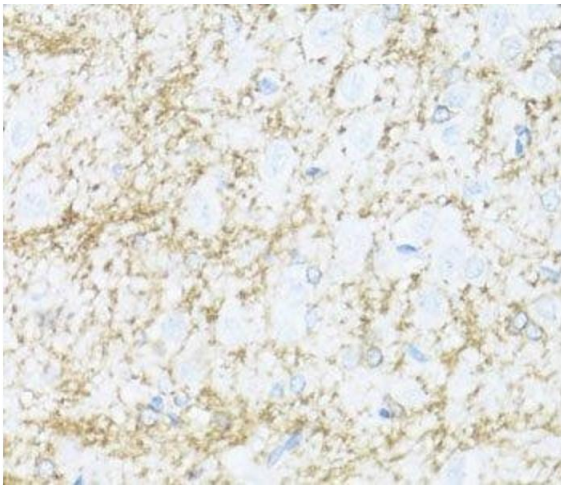
Format:	Liquid
Concentration:	1 mg/mL
Buffer:	PBS with 0.02 % sodium azide, 50 % glycerol, pH 7.3
Preservative:	Sodium azide
Precaution of Use:	This product contains Sodium azide: a POISONOUS AND HAZARDOUS SUBSTANCE which should be handled by trained staff only.
Storage:	-20 °C
Storage Comment:	Store at -20°C. Avoid freeze / thaw cycles.

## Images



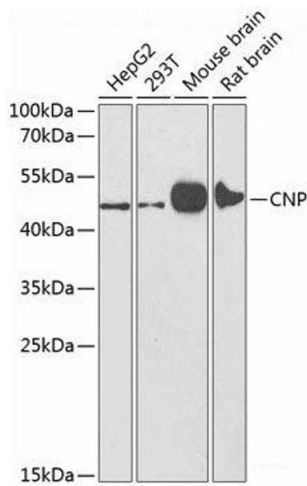
### Immunohistochemistry (Paraffin-embedded Sections)

**Image 1.** Immunohistochemistry of paraffin-embedded Mouse spinal cord using CNP Polyclonal Antibody at dilution of 1:100 (40x lens).



### Immunohistochemistry (Paraffin-embedded Sections)

**Image 2.** Immunohistochemistry of paraffin-embedded Rat brain using CNP Polyclonal Antibody at dilution of 1:100 (40x lens).



### Western Blotting

**Image 3.** Western blot analysis of extracts of various cell lines using CNP Polyclonal Antibody at dilution of 1:1000.