



[Go to Product page](#)

Datasheet for ABIN7255217

anti-SPG7 antibody

1 Image

Overview

Quantity:	200 µL
Target:	SPG7
Reactivity:	Human, Mouse, Rat
Host:	Rabbit
Clonality:	Polyclonal
Conjugate:	This SPG7 antibody is un-conjugated
Application:	Western Blotting (WB)

Product Details

Immunogen:	Recombinant fusion protein of human SPG7 (NP_003110.1).
Isotype:	IgG
Characteristics:	Polyclonal Antibody
Purification:	Affinity purification

Target Details

Target:	SPG7
Alternative Name:	SPG7 (SPG7 Products)
Background:	This gene encodes a mitochondrial metalloprotease protein that is a member of the AAA family. Members of this protein family share an ATPase domain and have roles in diverse cellular processes including membrane trafficking, intracellular motility, organelle biogenesis, protein folding, and proteolysis. Mutations in this gene cause autosomal recessive spastic

Target Details

paraplegia 7. Two transcript variants encoding distinct isoforms have been identified.

Molecular Weight: Observed_MW: 88 kDa
Calculated_MW: 53 kDa/88 kDa

Gene ID: 6687

UniProt: [Q9UQ90](#)

Application Details

Application Notes: WB 1:1000-1:2000

Restrictions: For Research Use only

Handling

Format: Liquid

Concentration: 1 mg/mL

Buffer: PBS with 0.02 % sodium azide, 50 % glycerol, pH 7.3

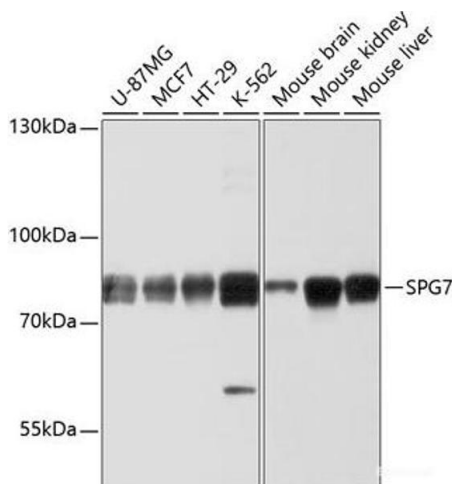
Preservative: Sodium azide

Precaution of Use: This product contains Sodium azide: a POISONOUS AND HAZARDOUS SUBSTANCE which should be handled by trained staff only.

Storage: -20 °C

Storage Comment: Store at -20°C. Avoid freeze / thaw cycles.

Images



Western Blotting

Image 1. Western blot analysis of extracts of various cell lines using SPG7 Polyclonal Antibody at dilution of 1:1000.