

Datasheet for ABIN7255227

**anti-EIF3B antibody**

## 4 Images

[Go to Product page](#)

## Overview

Quantity:	200 µL
Target:	EIF3B
Reactivity:	Human, Mouse, Rat
Host:	Rabbit
Clonality:	Polyclonal
Conjugate:	This EIF3B antibody is un-conjugated
Application:	Immunohistochemistry (IHC), Immunofluorescence (IF)

## Product Details

Immunogen:	Recombinant fusion protein of human EIF3B (NP_003742.2).
Isotype:	IgG
Characteristics:	Polyclonal Antibody
Purification:	Affinity purification

## Target Details

Target:	EIF3B
Alternative Name:	EIF3B ( <a href="#">EIF3B Products</a> )
Background:	EIF3B (Eukaryotic Translation Initiation Factor 3 Subunit B) is a Protein Coding gene. Diseases associated with EIF3B include Mouth Disease. Among its related pathways are Activation of the mRNA upon binding of the cap-binding complex and eIFs, and subsequent binding to 43S and Viral mRNA Translation. Gene Ontology (GO) annotations related to this gene include nucleic

## Target Details

acid binding and nucleotide binding.

Gene ID: 8662

UniProt: [P55884](#)

Pathways: [Ribonucleoprotein Complex Subunit Organization](#)

## Application Details

Application Notes: IHC 1:50-1:200 IF 1:50-1:200

Restrictions: For Research Use only

## Handling

Format: Liquid

Concentration: 1 mg/mL

Buffer: PBS with 0.02 % sodium azide, 50 % glycerol, pH 7.3

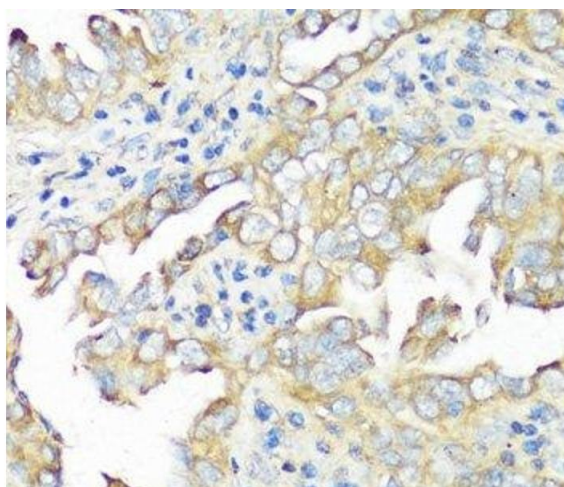
Preservative: Sodium azide

Precaution of Use: This product contains Sodium azide: a POISONOUS AND HAZARDOUS SUBSTANCE which should be handled by trained staff only.

Storage: -20 °C

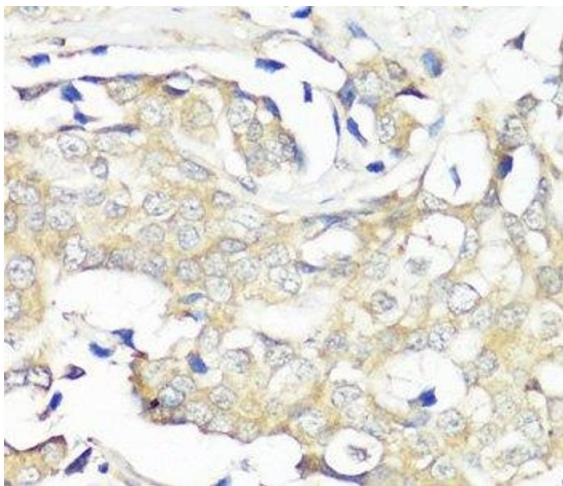
Storage Comment: Store at -20°C. Avoid freeze / thaw cycles.

## Images



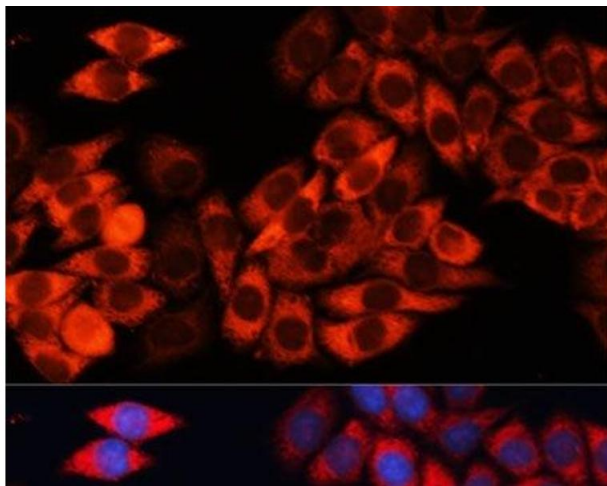
### Immunohistochemistry (Paraffin-embedded Sections)

**Image 1.** Immunohistochemistry of paraffin-embedded Human lung cancer using EIF3B Polyclonal Antibody at dilution of 1:100 (40x lens).



#### Immunohistochemistry (Paraffin-embedded Sections)

**Image 2.** Immunohistochemistry of paraffin-embedded Human breast cancer using EIF3B Polyclonal Antibody at dilution of 1:100 (40x lens).



#### Immunofluorescence

**Image 3.** Immunofluorescence analysis of HeLa cells using EIF3B Polyclonal Antibody at dilution of 1:100 (40x lens). Blue: DAPI for nuclear staining.

Please check the [product details page](#) for more images. Overall 4 images are available for ABIN7255227.