

Datasheet for ABIN7255257

**anti-BANK1 antibody****1** Image[Go to Product page](#)

## Overview

Quantity:	200 µL
Target:	BANK1
Reactivity:	Human, Mouse, Rat
Host:	Rabbit
Clonality:	Polyclonal
Conjugate:	This BANK1 antibody is un-conjugated
Application:	Western Blotting (WB)

## Product Details

Immunogen:	Recombinant fusion protein of human BANK1 (NP_060405.4).
Isotype:	IgG
Characteristics:	Polyclonal Antibody
Purification:	Affinity purification

## Target Details

Target:	BANK1
Alternative Name:	BANK1 ( <a href="#">BANK1 Products</a> )
Background:	<p>The protein encoded by this gene is a B-cell-specific scaffold protein that functions in B-cell receptor-induced calcium mobilization from intracellular stores. This protein can also promote Lyn-mediated tyrosine phosphorylation of inositol 1,4,5-trisphosphate receptors.</p> <p>Polymorphisms in this gene are associated with susceptibility to systemic lupus</p>

## Target Details

erythematosus. Alternative splicing results in multiple transcript variants.

Molecular Weight:	Observed_MW: 89 kDa
	Calculated_MW: 73 kDa/86 kDa/88 kDa/89 kDa
Gene ID:	55024
UniProt:	<a href="#">Q8NDB2</a>

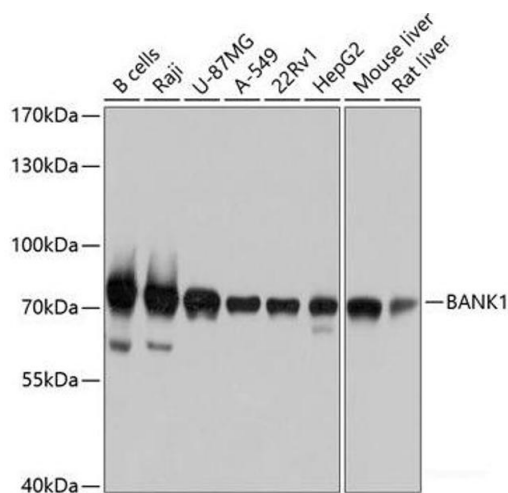
## Application Details

Application Notes:	WB 1:1000-1:2000
Restrictions:	For Research Use only

## Handling

Format:	Liquid
Concentration:	1 mg/mL
Buffer:	PBS with 0.02 % sodium azide, 50 % glycerol, pH 7.3
Preservative:	Sodium azide
Precaution of Use:	This product contains Sodium azide: a POISONOUS AND HAZARDOUS SUBSTANCE which should be handled by trained staff only.
Storage:	-20 °C
Storage Comment:	Store at -20°C. Avoid freeze / thaw cycles.

## Images



### Western Blotting

**Image 1.** Western blot analysis of extracts of various cell lines using BANK1 Polyclonal Antibody at dilution of 1:1000.