

Datasheet for ABIN7255267

**anti-SLAMF6 antibody**[Go to Product page](#)**1** Image

## Overview

Quantity:	200 µL
Target:	SLAMF6
Reactivity:	Human, Mouse, Rat
Host:	Rabbit
Clonality:	Polyclonal
Conjugate:	This SLAMF6 antibody is un-conjugated
Application:	Western Blotting (WB)

## Product Details

Immunogen:	Recombinant protein of human SLAMF6
Isotype:	IgG
Characteristics:	Polyclonal Antibody
Purification:	Affinity purification

## Target Details

Target:	SLAMF6
Alternative Name:	SLAMF6 ( <a href="#">SLAMF6 Products</a> )
Background:	The protein encoded by this gene is a type I transmembrane protein, belonging to the CD2 subfamily of the immunoglobulin superfamily. This encoded protein is expressed on Natural killer (NK), T, and B lymphocytes. It undergoes tyrosine phosphorylation and associates with the Src homology 2 domain-containing protein (SH2D1A) as well as with SH2 domain-containing

## Target Details

phosphatases (SHPs). It functions as a coreceptor in the process of NK cell activation. It can also mediate inhibitory signals in NK cells from X-linked lymphoproliferative patients. Alternative splicing results in multiple transcript variants encoding distinct isoforms.

Molecular Weight: Observed\_MW: 70 kDa  
Calculated\_MW: 24 kDa/37 kDa

Gene ID: 114836

UniProt: [Q96DU3](#)

## Application Details

Application Notes: WB 1:500-1:2000

Restrictions: For Research Use only

## Handling

Format: Liquid

Concentration: 1 mg/mL

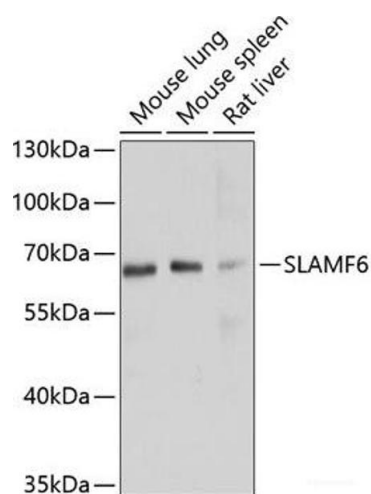
Buffer: PBS with 0.02 % sodium azide, 50 % glycerol, pH 7.3

Preservative: Sodium azide

Precaution of Use: This product contains Sodium azide: a POISONOUS AND HAZARDOUS SUBSTANCE which should be handled by trained staff only.

Storage: -20 °C

Storage Comment: Store at -20°C. Avoid freeze / thaw cycles.



Western Blotting

**Image 1.** Western blot analysis of extracts of various cell lines using SLAMF6 Polyclonal Antibody at dilution of 1:1000.