



[Go to Product page](#)

Datasheet for ABIN7255285
anti-KLHDC5 antibody

4 Images

Overview

Quantity:	200 µL
Target:	KLHDC5 (KLHL42)
Reactivity:	Human, Mouse
Host:	Rabbit
Clonality:	Polyclonal
Conjugate:	This KLHDC5 antibody is un-conjugated
Application:	Immunohistochemistry (IHC)

Product Details

Immunogen:	Recombinant fusion protein of human KLHL42 (NP_065833.1).
Isotype:	IgG
Characteristics:	Polyclonal Antibody
Purification:	Affinity purification

Target Details

Target:	KLHDC5 (KLHL42)
Alternative Name:	KLHL42 (KLHL42 Products)
Background:	KLHL42 (Kelch Like Family Member 42) is a Protein Coding gene. Diseases associated with KLHL42 include Bardet-Biedl Syndrome 10. Among its related pathways are Innate Immune System and Class I MHC mediated antigen processing and presentation. Gene Ontology (GO) annotations related to this gene include ubiquitin-protein transferase activity. An important

Target Details

paralog of this gene is KLHL32.

Gene ID: 57542

UniProt: [Q9P2K6](#)

Application Details

Application Notes: IHC 1:50-1:200

Restrictions: For Research Use only

Handling

Format: Liquid

Concentration: 1 mg/mL

Buffer: PBS with 0.02 % sodium azide, 50 % glycerol, pH 7.3

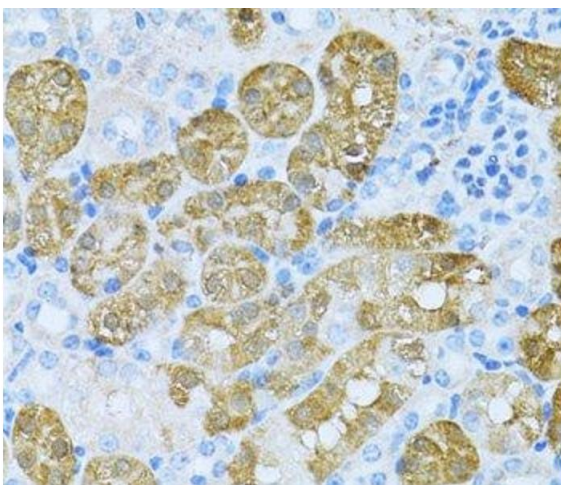
Preservative: Sodium azide

Precaution of Use: This product contains Sodium azide: a POISONOUS AND HAZARDOUS SUBSTANCE which should be handled by trained staff only.

Storage: -20 °C

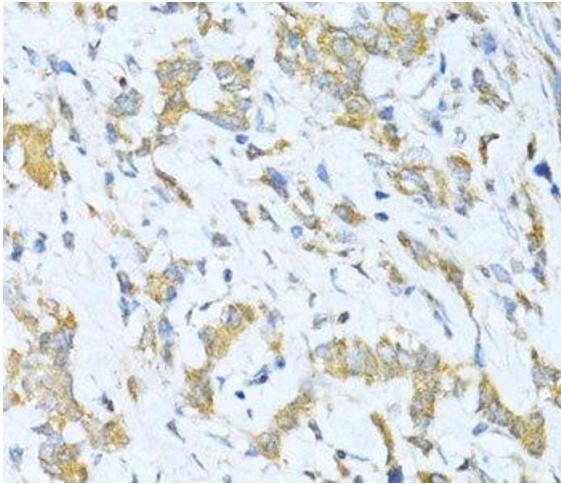
Storage Comment: Store at -20°C. Avoid freeze / thaw cycles.

Images



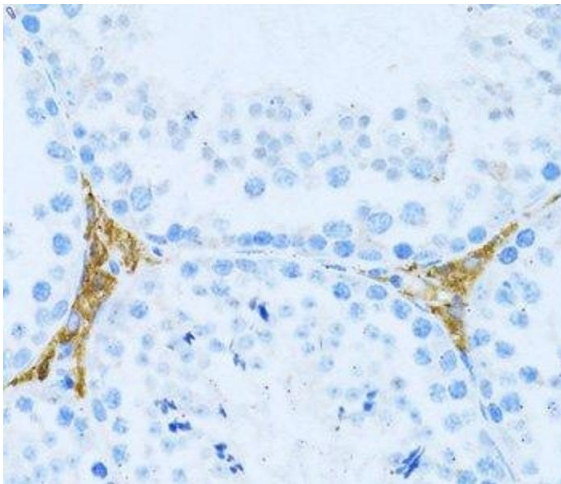
Immunohistochemistry (Paraffin-embedded Sections)

Image 1. Immunohistochemistry of paraffin-embedded Mouse kidney using KLHL42 Polyclonal Antibody at dilution of 1:100 (40x lens).



Immunohistochemistry (Paraffin-embedded Sections)

Image 2. Immunohistochemistry of paraffin-embedded Human gastric cancer using KLHL42 Polyclonal Antibody at dilution of 1:100 (40x lens).



Immunohistochemistry (Paraffin-embedded Sections)

Image 3. Immunohistochemistry of paraffin-embedded Mouse testis leydig using KLHL42 Polyclonal Antibody at dilution of 1:100 (40x lens).

Please check the [product details page](#) for more images. Overall 4 images are available for ABIN7255285.