

Datasheet for ABIN7255311  
**anti-ADAM10 antibody**[Go to Product page](#)

## 1 Image

## Overview

Quantity:	200 µL
Target:	ADAM10
Reactivity:	Human, Rat, Mouse
Host:	Rabbit
Clonality:	Polyclonal
Conjugate:	This ADAM10 antibody is un-conjugated
Application:	Immunofluorescence (IF)

## Product Details

Immunogen:	Recombinant fusion protein of human ADAM10 (NP_001101.1).
Isotype:	IgG
Characteristics:	Polyclonal Antibody
Purification:	Affinity purification

## Target Details

Target:	ADAM10
Alternative Name:	ADAM10 ( <a href="#">ADAM10 Products</a> )
Background:	Members of the ADAM family are cell surface proteins with a unique structure possessing both potential adhesion and protease domains. This gene encodes an ADAM family member that cleaves many proteins including TNF-alpha and E-cadherin. Alternate splicing results in multiple transcript variants encoding different proteins that may undergo similar processing.

## Target Details

Gene ID:	102
UniProt:	<a href="#">O14672</a>
Pathways:	<a href="#">Notch Signaling</a> , <a href="#">EGFR Signaling Pathway</a>

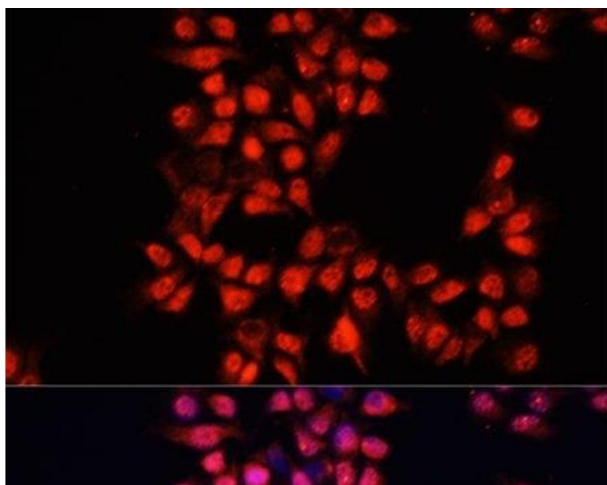
## Application Details

Application Notes:	IF 1:50-1:200
Restrictions:	For Research Use only

## Handling

Format:	Liquid
Concentration:	1 mg/mL
Buffer:	PBS with 0.02 % sodium azide, 50 % glycerol, pH 7.3
Preservative:	Sodium azide
Precaution of Use:	This product contains Sodium azide: a POISONOUS AND HAZARDOUS SUBSTANCE which should be handled by trained staff only.
Storage:	-20 °C
Storage Comment:	Store at -20°C. Avoid freeze / thaw cycles.

## Images



### Immunofluorescence

**Image 1.** Immunofluorescence analysis of HeLa cells using ADAM10 Polyclonal Antibody at dilution of 1:100. Blue: DAPI for nuclear staining.