



## Datasheet for ABIN7255327 anti-TREM2 antibody



[Go to Product page](#)

### 8 Images

#### Overview

Quantity:	200 µL
Target:	TREM2
Reactivity:	Mouse, Human, Rat
Host:	Rabbit
Clonality:	Polyclonal
Conjugate:	This TREM2 antibody is un-conjugated
Application:	Western Blotting (WB), Immunohistochemistry (IHC), Immunofluorescence (IF)

#### Product Details

Immunogen:	Recombinant fusion protein of human TREM2 (NP_061838.1).
Isotype:	IgG
Characteristics:	Polyclonal Antibody
Purification:	Affinity purification

#### Target Details

Target:	TREM2
Alternative Name:	TREM2 ( <a href="#">TREM2 Products</a> )
Background:	This gene encodes a membrane protein that forms a receptor signaling complex with the TYRO protein tyrosine kinase binding protein. The encoded protein functions in immune response and may be involved in chronic inflammation by triggering the production of constitutive inflammatory cytokines. Defects in this gene are a cause of polycystic lipomembranous

## Target Details

---

osteodysplasia with sclerosing leukoencephalopathy (PLOS). Alternative splicing results in multiple transcript variants encoding different isoforms.

Molecular Weight: Observed\_MW: 25 kDa  
Calculated\_MW: 24 kDa/25 kDa

Gene ID: 54209

UniProt: [Q9NZC2](#)

## Application Details

---

Application Notes: WB 1:500-1:1000 IHC 1:50-1:200 IF 1:20-1:100

Restrictions: For Research Use only

## Handling

---

Format: Liquid

Concentration: 1 mg/mL

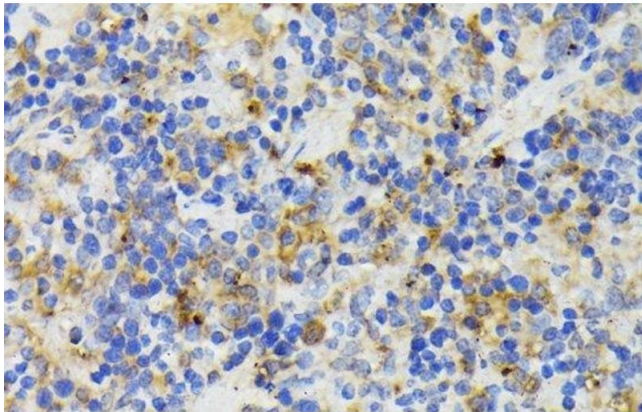
Buffer: PBS with 0.02 % sodium azide, 50 % glycerol, pH 7.3

Preservative: Sodium azide

Precaution of Use: This product contains Sodium azide: a POISONOUS AND HAZARDOUS SUBSTANCE which should be handled by trained staff only.

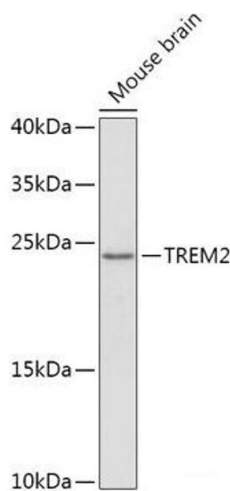
Storage: -20 °C

Storage Comment: Store at -20°C. Avoid freeze / thaw cycles.



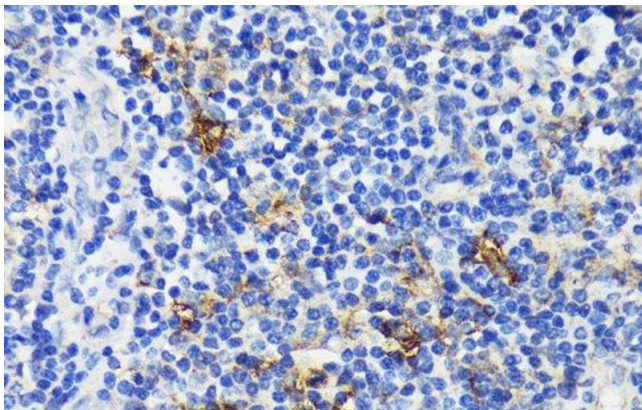
### Immunohistochemistry (Paraffin-embedded Sections)

**Image 1.** Immunohistochemistry of paraffin-embedded Mouse spleen using TREM2 Polyclonal Antibody at dilution of 1:200 (40x lens).



### Western Blotting

**Image 2.** Western blot analysis of extracts of Mouse brain using TREM2 Polyclonal Antibody at dilution of 1:1000.



### Immunohistochemistry (Paraffin-embedded Sections)

**Image 3.** Immunohistochemistry of paraffin-embedded Human tonsil using TREM2 Polyclonal Antibody at dilution of 1:200 (40x lens).

Please check the [product details page](#) for more images. Overall 8 images are available for ABIN7255327.