

Datasheet for ABIN7255333

anti-ANO1 antibody**1** Image[Go to Product page](#)

Overview

Quantity:	200 µL
Target:	ANO1
Reactivity:	Human, Mouse, Rat
Host:	Rabbit
Clonality:	Polyclonal
Conjugate:	This ANO1 antibody is un-conjugated
Application:	Immunofluorescence (IF)

Product Details

Immunogen:	Recombinant fusion protein of human ANO1 (NP_060513.5).
Isotype:	IgG
Characteristics:	Polyclonal Antibody
Purification:	Affinity purification

Target Details

Target:	ANO1
Alternative Name:	ANO1 (ANO1 Products)
Background:	TMEM16A, also known as DOG1, ORAOV2, TAOS2 or ANO1 (anoctamin 1), is a 986 amino acid multi-pass membrane protein that localizes to both the cell membrane and the cytoplasm and belongs to the anoctamin family. Expressed in a variety of tissues with highest expression in skeletal muscle and liver, TMEM16A functions as a calcium-activated chloride channel that is

Target Details

required for normal tracheal development. Human TMEM16A shares 90 % sequence identity with its mouse counterpart, suggesting a conserved role between species. TMEM16A is present in breast, pancreatic, gastric, and uterine cancers, as well as in neck, ovarian and parathyroid tumors, suggesting a role for TMEM16A in carcinogenesis. Three isoforms of TMEM16A exist due to alternative splicing events.

Gene ID: 55107

UniProt: [Q5XXA6](#)

Application Details

Application Notes: IF 1:100-1:200

Restrictions: For Research Use only

Handling

Format: Liquid

Concentration: 1 mg/mL

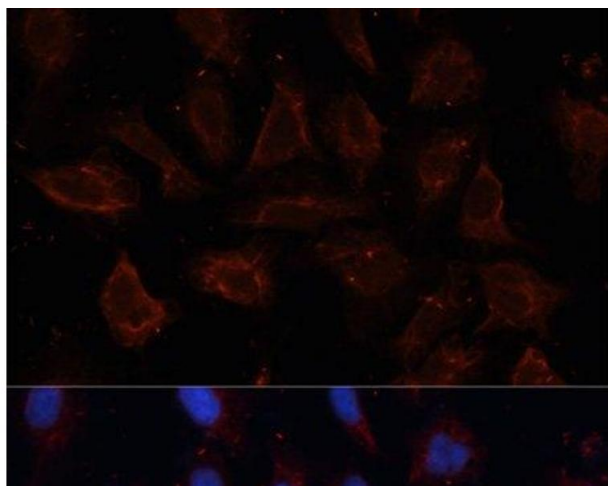
Buffer: PBS with 0.02 % sodium azide, 50 % glycerol, pH 7.3

Preservative: Sodium azide

Precaution of Use: This product contains Sodium azide: a POISONOUS AND HAZARDOUS SUBSTANCE which should be handled by trained staff only.

Storage: -20 °C

Storage Comment: Store at -20°C. Avoid freeze / thaw cycles.



Immunofluorescence

Image 1. Immunofluorescence analysis of U2OS cells using ANO1 Polyclonal Antibody at dilution of 1:100. Blue: DAPI for nuclear staining.