

Datasheet for ABIN7255347

anti-SIGLEC8 antibody[Go to Product page](#)**1** Image

Overview

Quantity:	200 µL
Target:	SIGLEC8
Reactivity:	Human, Mouse, Rat
Host:	Rabbit
Clonality:	Polyclonal
Conjugate:	This SIGLEC8 antibody is un-conjugated
Application:	Western Blotting (WB)

Product Details

Immunogen:	Recombinant fusion protein of human SIGLEC8 (NP_055257.2).
Isotype:	IgG
Characteristics:	Polyclonal Antibody
Purification:	Affinity purification

Target Details

Target:	SIGLEC8
Alternative Name:	SIGLEC8 (SIGLEC8 Products)
Background:	<p>Sialic acid-binding immunoglobulin (Ig)-like lectins, or SIGLECs, are a family of type 1 transmembrane proteins each having a unique expression pattern, mostly in hemopoietic cells.</p> <p>SIGLEC8 is a member of the CD33-like subgroup of SIGLECs, which are localized to 19q13.3-q13.4 and have 2 conserved cytoplasmic tyrosine-based motifs: an immunoreceptor tyrosine-</p>

Target Details

based inhibitory motif, or ITIM (see MIM 604964), and a motif homologous to one identified in signaling lymphocyte activation molecule that mediates an association with SLAM-associated protein .

Molecular Weight: Observed_MW: 60 kDa
Calculated_MW: 44 kDa/46 kDa/54 kDa

Gene ID: 27181

UniProt: [Q9NYZ4](#)

Application Details

Application Notes: WB 1:500-1:2000

Restrictions: For Research Use only

Handling

Format: Liquid

Concentration: 1 mg/mL

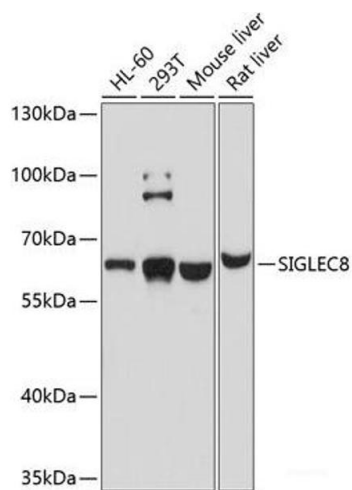
Buffer: PBS with 0.02 % sodium azide, 50 % glycerol, pH 7.3

Preservative: Sodium azide

Precaution of Use: This product contains Sodium azide: a POISONOUS AND HAZARDOUS SUBSTANCE which should be handled by trained staff only.

Storage: -20 °C

Storage Comment: Store at -20°C. Avoid freeze / thaw cycles.



Western Blotting

Image 1. Western blot analysis of extracts of various cell lines using SIGLEC8 Polyclonal Antibody at dilution of 1:1000.