

Datasheet for ABIN7255365

**anti-GPSM2 antibody**[Go to Product page](#)**2** Images

## Overview

Quantity:	200 µL
Target:	GPSM2
Reactivity:	Human, Mouse
Host:	Rabbit
Clonality:	Polyclonal
Conjugate:	This GPSM2 antibody is un-conjugated
Application:	Western Blotting (WB), Immunohistochemistry (IHC)

## Product Details

Immunogen:	Recombinant fusion protein of human GPSM2 (NP_037428.3).
Isotype:	IgG
Characteristics:	Polyclonal Antibody
Purification:	Affinity purification

## Target Details

Target:	GPSM2
Alternative Name:	GPSM2 ( <a href="#">GPSM2 Products</a> )
Background:	The protein encoded by this gene belongs to a family of proteins that modulate activation of G proteins, which transduce extracellular signals received by cell surface receptors into integrated cellular responses. The N-terminal half of this protein contains 10 copies of leu-gly-asn (LGN) repeat, and the C-terminal half contains 4 GoLoco motifs, which are involved in guanine

## Target Details

nucleotide exchange. This protein may play a role in neuroblast division and in the development of normal hearing. Mutations in this gene are associated with autosomal recessive nonsyndromic deafness (DFNB82). Alternative splicing results in multiple transcript variants.

Molecular Weight: Observed\_MW: 76 kDa  
Calculated\_MW: 76 kDa

Gene ID: 29899

UniProt: [P81274](#)

Pathways: [Regulation of G-Protein Coupled Receptor Protein Signaling](#)

## Application Details

Application Notes: WB 1:1000-1:2000 IHC 1:50-1:200

Restrictions: For Research Use only

## Handling

Format: Liquid

Concentration: 1 mg/mL

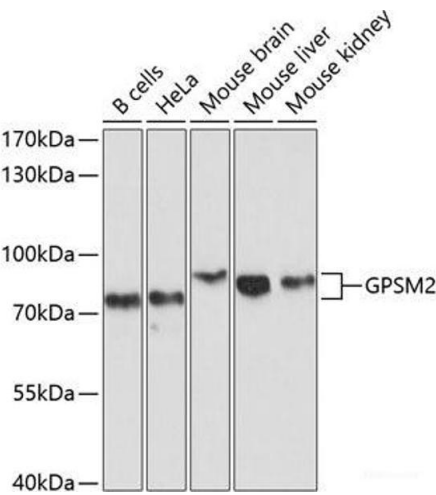
Buffer: PBS with 0.02 % sodium azide, 50 % glycerol, pH 7.3

Preservative: Sodium azide

Precaution of Use: This product contains Sodium azide: a POISONOUS AND HAZARDOUS SUBSTANCE which should be handled by trained staff only.

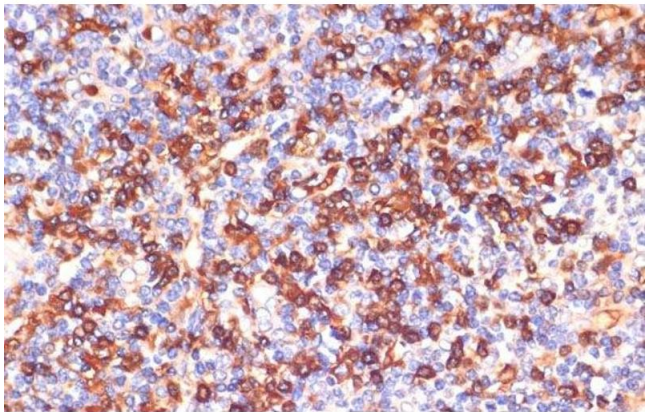
Storage: -20 °C

Storage Comment: Store at -20°C. Avoid freeze / thaw cycles.



### Western Blotting

**Image 1.** Western blot analysis of extracts of various cell lines using GPSM2 Polyclonal Antibody at dilution of 1:1000.



### Immunohistochemistry (Paraffin-embedded Sections)

**Image 2.** Immunohistochemistry of paraffin-embedded Human tonsil using GPSM2 Polyclonal Antibody at dilution of 1:100 (40x lens).