



## Datasheet for ABIN7255375 anti-PARG antibody



[Go to Product page](#)

### 1 Image

#### Overview

Quantity:	200 µL
Target:	PARG
Reactivity:	Human, Mouse, Rat
Host:	Rabbit
Clonality:	Polyclonal
Conjugate:	This PARG antibody is un-conjugated
Application:	Western Blotting (WB)

#### Product Details

Immunogen:	Recombinant fusion protein of human PARG (NP_003622.2).
Isotype:	IgG
Characteristics:	Polyclonal Antibody
Purification:	Affinity purification

#### Target Details

Target:	PARG
Alternative Name:	PARG ( <a href="#">PARG Products</a> )
Background:	Poly(ADP-ribose) glycohydrolase (PARG) is the major enzyme responsible for the catabolism of poly(ADP-ribose), a reversible covalent-modifier of chromosomal proteins. The protein is found in many tissues and may be subject to proteolysis generating smaller, active products. Several transcript variants encoding different isoforms have been found for this gene.

## Target Details

Molecular Weight:	Observed_MW: 111 kDa Calculated_MW: 54 kDa/60 kDa/99 kDa/102 kDa/111 kDa
Gene ID:	8505
UniProt:	<a href="#">Q86W56</a>

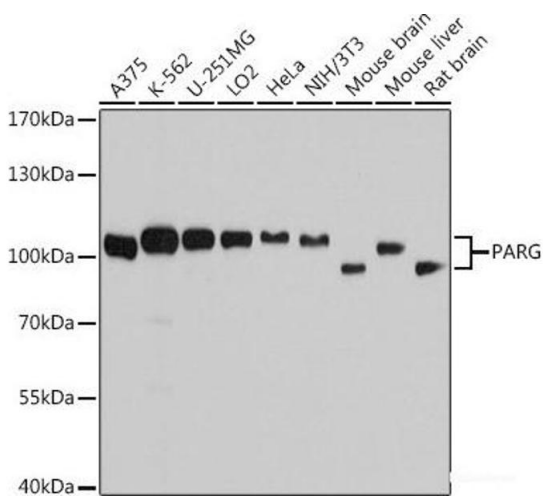
## Application Details

Application Notes:	WB 1:1000-1:2000
Restrictions:	For Research Use only

## Handling

Format:	Liquid
Concentration:	1 mg/mL
Buffer:	PBS with 0.02 % sodium azide, 50 % glycerol, pH 7.3
Preservative:	Sodium azide
Precaution of Use:	This product contains Sodium azide: a POISONOUS AND HAZARDOUS SUBSTANCE which should be handled by trained staff only.
Storage:	-20 °C
Storage Comment:	Store at -20°C. Avoid freeze / thaw cycles.

## Images



### Western Blotting

**Image 1.** Western blot analysis of extracts of various cell lines using PARG Polyclonal Antibody at dilution of 1:7000.