



[Go to Product page](#)

Datasheet for ABIN7255385  
**anti-PPP3CA antibody**

1 Image

### Overview

Quantity:	200 µL
Target:	PPP3CA
Reactivity:	Human, Mouse
Host:	Rabbit
Clonality:	Polyclonal
Conjugate:	This PPP3CA antibody is un-conjugated
Application:	Immunofluorescence (IF)

### Product Details

Immunogen:	Recombinant fusion protein of human PPP3CA (NP_001124163.1).
Isotype:	IgG
Characteristics:	Polyclonal Antibody
Purification:	Affinity purification

### Target Details

Target:	PPP3CA
Alternative Name:	PPP3CA ( <a href="#">PPP3CA Products</a> )
Background:	Protein phosphatase 3, catalytic subunit, alpha isozyemeis a protein that in humans is encoded by the PPP3CA gene. Calcium-dependent, calmodulin-stimulated protein phosphatase. Many of the substrates contain a PxIxIT motif. This subunit may have a role in the calmodulin activation of calcineurin. Dephosphorylates DNM1L, HSPB1 and SSH1.

## Target Details

Gene ID:	5530
UniProt:	<a href="#">Q08209</a>
Pathways:	<a href="#">RTK Signaling</a> , <a href="#">WNT Signaling</a> , <a href="#">Fc-epsilon Receptor Signaling Pathway</a> , <a href="#">Negative Regulation of Hormone Secretion</a> , <a href="#">Carbohydrate Homeostasis</a> , <a href="#">Synaptic Membrane</a> , <a href="#">Skeletal Muscle Fiber Development</a> , <a href="#">Protein targeting to Nucleus</a> , <a href="#">VEGF Signaling</a> , <a href="#">BCR Signaling</a>

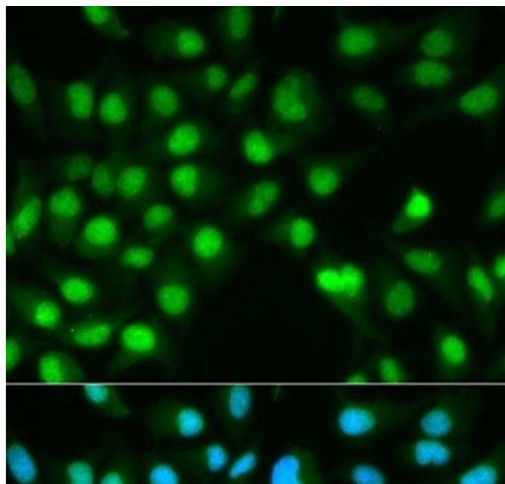
## Application Details

Application Notes:	IF 1:50-1:200
Restrictions:	For Research Use only

## Handling

Format:	Liquid
Concentration:	1 mg/mL
Buffer:	PBS with 0.02 % sodium azide, 50 % glycerol, pH 7.3
Preservative:	Sodium azide
Precaution of Use:	This product contains Sodium azide: a POISONOUS AND HAZARDOUS SUBSTANCE which should be handled by trained staff only.
Storage:	-20 °C
Storage Comment:	Store at -20°C. Avoid freeze / thaw cycles.

## Images



### Immunofluorescence

**Image 1.** Immunofluorescence analysis of HeLa cells using PPP3CA Polyclonal Antibody