

Datasheet for ABIN7255393

**anti-CYBA antibody****3** Images[Go to Product page](#)

## Overview

Quantity:	200 µL
Target:	CYBA
Reactivity:	Human
Host:	Rabbit
Clonality:	Polyclonal
Conjugate:	This CYBA antibody is un-conjugated
Application:	Immunofluorescence (IF), Immunohistochemistry (IHC)

## Product Details

Immunogen:	Recombinant fusion protein of human CYBA (NP_000092.2).
Isotype:	IgG
Characteristics:	Polyclonal Antibody
Purification:	Affinity purification

## Target Details

Target:	CYBA
Alternative Name:	CYBA ( <a href="#">CYBA Products</a> )
Background:	Cytochrome b is comprised of a light chain (alpha) and a heavy chain (beta). This gene encodes the light, alpha subunit which has been proposed as a primary component of the microbicidal oxidase system of phagocytes. Mutations in this gene are associated with autosomal recessive chronic granulomatous disease (CGD), that is characterized by the failure of activated

## Target Details

phagocytes to generate superoxide, which is important for the microbicidal activity of these cells.

Gene ID: 1535

UniProt: [P13498](#)

Pathways: [Regulation of Systemic Arterial Blood Pressure by Hormones](#), [Carbohydrate Homeostasis](#)

## Application Details

Application Notes: IHC 1:50-1:200 IF 1:50-1:100

Restrictions: For Research Use only

## Handling

Format: Liquid

Concentration: 1 mg/mL

Buffer: PBS with 0.02 % sodium azide, 50 % glycerol, pH 7.3

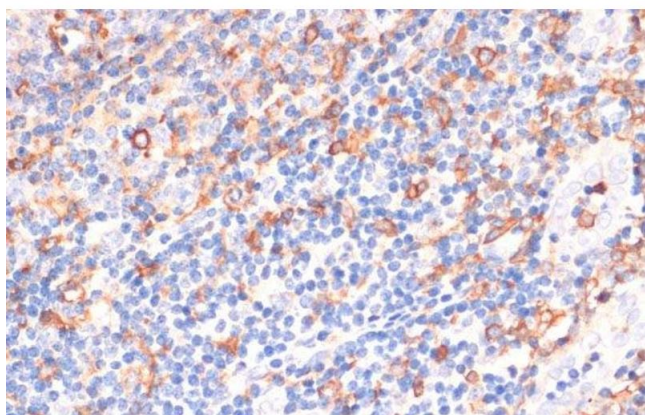
Preservative: Sodium azide

Precaution of Use: This product contains Sodium azide: a POISONOUS AND HAZARDOUS SUBSTANCE which should be handled by trained staff only.

Storage: -20 °C

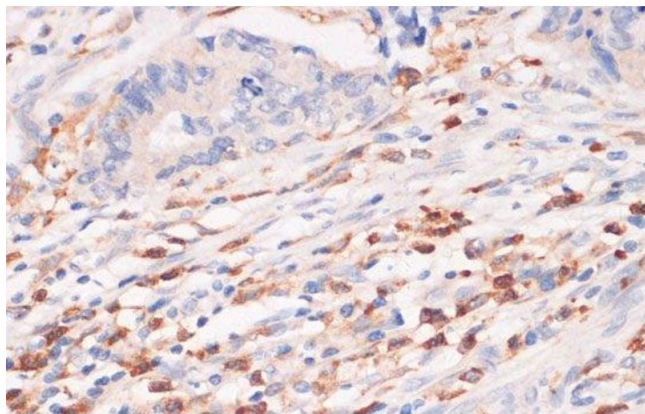
Storage Comment: Store at -20°C. Avoid freeze / thaw cycles.

## Images



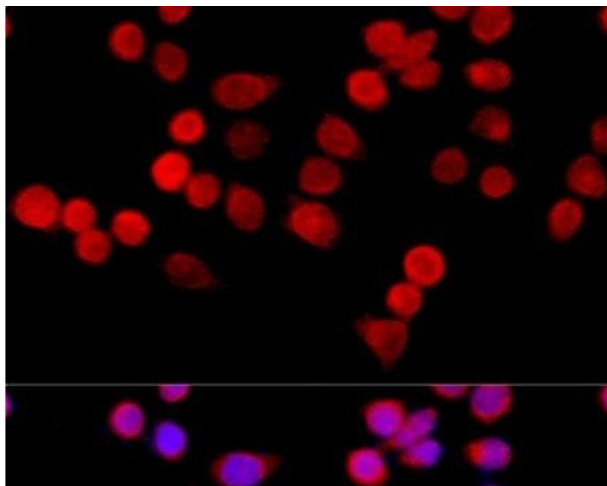
### Immunohistochemistry (Paraffin-embedded Sections)

**Image 1.** Immunohistochemistry of paraffin-embedded Human tonsil using CYBA Polyclonal Antibody at dilution of 1:100 (40x lens).



#### Immunohistochemistry (Paraffin-embedded Sections)

**Image 2.** Immunohistochemistry of paraffin-embedded Human colon carcinoma using CYBA Polyclonal Antibody at dilution of 1:100 (40x lens).



#### Immunofluorescence

**Image 3.** Immunofluorescence analysis of HeLa cells using CYBA Polyclonal Antibody at dilution of 1:100 (40x lens). Blue: DAPI for nuclear staining.