



Datasheet for ABIN7255395

## anti-CSR1 antibody



[Go to Product page](#)

### 1 Image

#### Overview

Quantity:	200 µL
Target:	CSR1
Reactivity:	Human, Mouse
Host:	Rabbit
Clonality:	Polyclonal
Conjugate:	This CSR1 antibody is un-conjugated
Application:	Western Blotting (WB)

#### Product Details

Immunogen:	Recombinant fusion protein of human CSR1 (NP_004069.1).
Isotype:	IgG
Characteristics:	Polyclonal Antibody
Purification:	Affinity purification

#### Target Details

Target:	CSR1
Alternative Name:	CSR1 ( <a href="#">CSR1 Products</a> )
Background:	This gene encodes a member of the cysteine-rich protein (CSR1) family. This gene family includes a group of LIM domain proteins, which may be involved in regulatory processes important for development and cellular differentiation. The LIM/double zinc-finger motif found in this gene product occurs in proteins with critical functions in gene regulation, cell growth, and

## Target Details

somatic differentiation. Alternatively spliced transcript variants have been described.

Molecular Weight: Observed\_MW: 21 kDa  
Calculated\_MW: 20 kDa

Gene ID: 1465

UniProt: [P21291](#)

## Application Details

Application Notes: WB 1:500-1:2000

Restrictions: For Research Use only

## Handling

Format: Liquid

Concentration: 1 mg/mL

Buffer: PBS with 0.02 % sodium azide, 50 % glycerol, pH 7.3

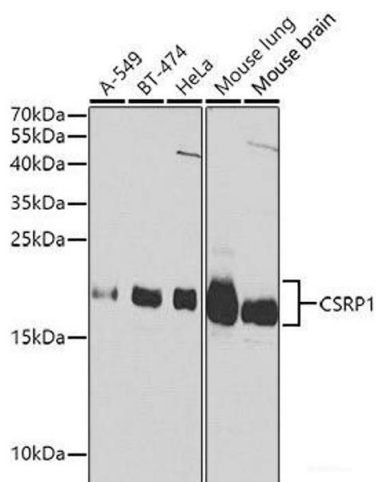
Preservative: Sodium azide

Precaution of Use: This product contains Sodium azide: a POISONOUS AND HAZARDOUS SUBSTANCE which should be handled by trained staff only.

Storage: -20 °C

Storage Comment: Store at -20°C. Avoid freeze / thaw cycles.

## Images



### Western Blotting

**Image 1.** Western blot analysis of extracts of various cell lines using CSRP1 Polyclonal Antibody at dilution of 1:1000.