

Datasheet for ABIN7255407
anti-Kallikrein 14 antibody[Go to Product page](#)

1 Image

Overview

Quantity:	200 µL
Target:	Kallikrein 14 (KLK14)
Reactivity:	Mouse
Host:	Rabbit
Clonality:	Polyclonal
Conjugate:	This Kallikrein 14 antibody is un-conjugated
Application:	Western Blotting (WB)

Product Details

Immunogen:	Recombinant fusion protein of human KLK14 (NP_071329.2).
Isotype:	IgG
Characteristics:	Polyclonal Antibody
Purification:	Affinity purification

Target Details

Target:	Kallikrein 14 (KLK14)
Alternative Name:	KLK14 (KLK14 Products)
Background:	This gene encodes a member of the kallikrein subfamily of serine proteases that have diverse physiological functions such as regulation of blood pressure and desquamation. The altered expression of this gene is implicated in the progression of different cancers including breast and prostate tumors. The encoded protein is a precursor that is proteolytically processed to

Target Details

generate the functional enzyme. This gene is one of the fifteen kallikrein subfamily members located in a cluster on chromosome 19. Alternative splicing results in multiple transcript variants.

Molecular Weight: Observed_MW: 29 kDa
Calculated_MW: 29 kDa

Gene ID: 43847

UniProt: [Q9P0G3](#)

Pathways: [Complement System](#), [Regulation of G-Protein Coupled Receptor Protein Signaling](#)

Application Details

Application Notes: WB 1:500-1:2000

Restrictions: For Research Use only

Handling

Format: Liquid

Concentration: 1 mg/mL

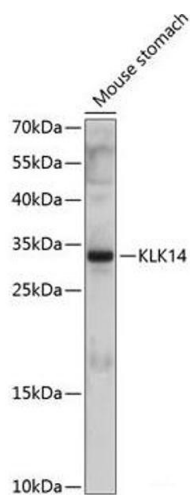
Buffer: PBS with 0.02 % sodium azide, 50 % glycerol, pH 7.3

Preservative: Sodium azide

Precaution of Use: This product contains Sodium azide: a POISONOUS AND HAZARDOUS SUBSTANCE which should be handled by trained staff only.

Storage: -20 °C

Storage Comment: Store at -20°C. Avoid freeze / thaw cycles.



Western Blotting

Image 1. Western blot analysis of extracts of Mouse stomach using KLK14 Polyclonal Antibody at dilution of 1:1000.