

Datasheet for ABIN7255409

**anti-SLC27A2 antibody**

3 Images

[Go to Product page](#)

## Overview

Quantity:	200 µL
Target:	SLC27A2
Reactivity:	Human, Mouse
Host:	Rabbit
Clonality:	Polyclonal
Conjugate:	This SLC27A2 antibody is un-conjugated
Application:	Western Blotting (WB), Immunohistochemistry (IHC)

## Product Details

Immunogen:	Recombinant fusion protein of human SLC27A2 (NP_001153101.1).
Isotype:	IgG
Characteristics:	Polyclonal Antibody
Purification:	Affinity purification

## Target Details

Target:	SLC27A2
Alternative Name:	SLC27A2 ( <a href="#">SLC27A2 Products</a> )
Background:	The protein encoded by this gene is an isozyme of long-chain fatty-acid-coenzyme A ligase family. Although differing in substrate specificity, subcellular localization, and tissue distribution, all isozymes of this family convert free long-chain fatty acids into fatty acyl-CoA esters, and thereby play a key role in lipid biosynthesis and fatty acid degradation. This isozyme

## Target Details

activates long-chain, branched-chain and very-long-chain fatty acids containing 22 or more carbons to their CoA derivatives. It is expressed primarily in liver and kidney, and is present in both endoplasmic reticulum and peroxisomes, but not in mitochondria. Its decreased peroxisomal enzyme activity is in part responsible for the biochemical pathology in X-linked adrenoleukodystrophy. Alternatively spliced transcript variants encoding different isoforms have been found for this gene.

Molecular Weight: Observed\_MW: 70 kDa  
Calculated\_MW: 64 kDa/70 kDa

Gene ID: 11001

UniProt: [O14975](#)

Pathways: [Monocarboxylic Acid Catabolic Process](#), [SARS-CoV-2 Protein Interactome](#)

## Application Details

Application Notes: WB 1:500-1:2000 IHC 1:50-1:200

Restrictions: For Research Use only

## Handling

Format: Liquid

Concentration: 1 mg/mL

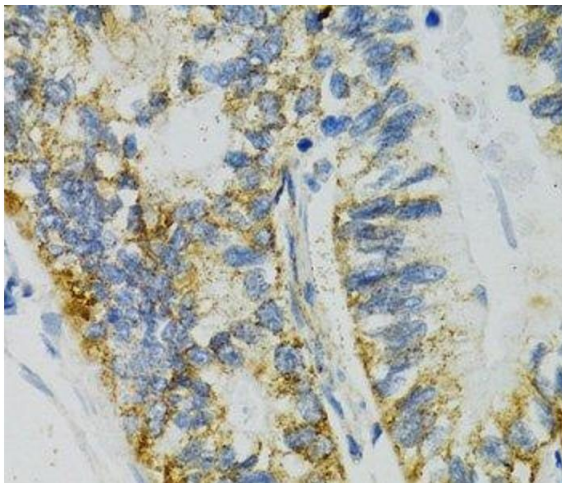
Buffer: PBS with 0.02 % sodium azide, 50 % glycerol, pH 7.3

Preservative: Sodium azide

Precaution of Use: This product contains Sodium azide: a POISONOUS AND HAZARDOUS SUBSTANCE which should be handled by trained staff only.

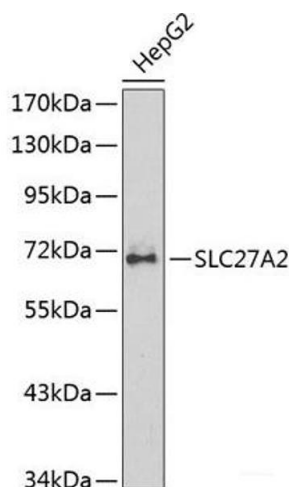
Storage: -20 °C

Storage Comment: Store at -20°C. Avoid freeze / thaw cycles.



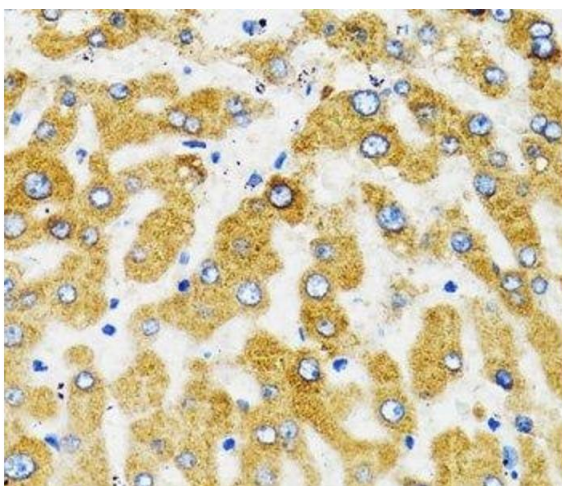
#### Immunohistochemistry (Paraffin-embedded Sections)

**Image 1.** Immunohistochemistry of paraffin-embedded Human gastric cancer using SLC27A2 Polyclonal Antibody at dilution of 1:100 (40x lens).



#### Western Blotting

**Image 2.** Western blot analysis of extracts of HepG2 cells using SLC27A2 Polyclonal Antibody.



#### Immunohistochemistry (Paraffin-embedded Sections)

**Image 3.** Immunohistochemistry of paraffin-embedded Human liver using SLC27A2 Polyclonal Antibody at dilution of 1:100 (40x lens).