

Datasheet for ABIN7255413

anti-PSMD14 antibody[Go to Product page](#)**1** Image

Overview

Quantity:	200 µL
Target:	PSMD14
Reactivity:	Human, Mouse, Rat
Host:	Rabbit
Clonality:	Polyclonal
Conjugate:	This PSMD14 antibody is un-conjugated
Application:	Immunofluorescence (IF)

Product Details

Immunogen:	Recombinant fusion protein of human PSMD14 (NP_005796.1).
Isotype:	IgG
Characteristics:	Polyclonal Antibody
Purification:	Affinity purification

Target Details

Target:	PSMD14
Alternative Name:	PSMD14 (PSMD14 Products)
Background:	This gene encodes a component of the 26S proteasome. The 26S proteasome is a large multiprotein complex that catalyzes the degradation of ubiquitinated intracellular proteins. The encoded protein is a component of the 19S regulatory cap complex of the 26S proteasome and mediates substrate deubiquitination. A pseudogene of this gene is also located on the long arm

Target Details

	of chromosome 2.
Gene ID:	10213
UniProt:	O00487
Pathways:	Mitotic G1-G1/S Phases , DNA Replication , M Phase , Positive Regulation of Endopeptidase Activity , Synthesis of DNA , Ubiquitin Proteasome Pathway

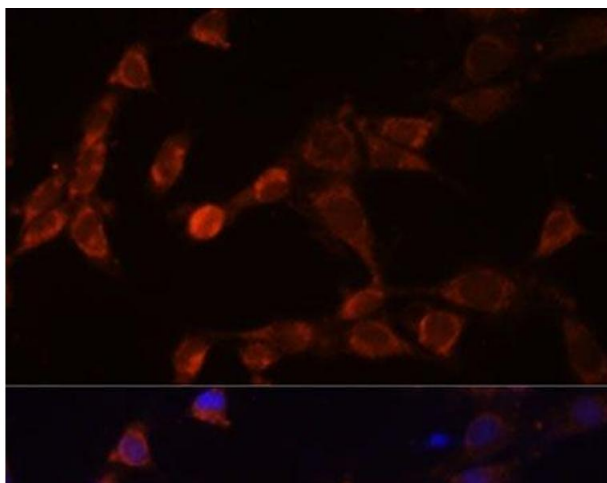
Application Details

Application Notes:	IF 1:50-1:100
Restrictions:	For Research Use only

Handling

Format:	Liquid
Concentration:	1 mg/mL
Buffer:	PBS with 0.02 % sodium azide, 50 % glycerol, pH 7.3
Preservative:	Sodium azide
Precaution of Use:	This product contains Sodium azide: a POISONOUS AND HAZARDOUS SUBSTANCE which should be handled by trained staff only.
Storage:	-20 °C
Storage Comment:	Store at -20°C. Avoid freeze / thaw cycles.

Images



Immunofluorescence

Image 1. Immunofluorescence analysis of NIH-3T3 cells using PSMD14 Polyclonal Antibody at dilution of 1:100 (40x lens). Blue: DAPI for nuclear staining.