



[Go to Product page](#)

Datasheet for ABIN7255419
anti-Neurotrophin 4 antibody

3 Images

Overview

Quantity:	200 µL
Target:	Neurotrophin 4 (NTF4)
Reactivity:	Human, Rat
Host:	Rabbit
Clonality:	Polyclonal
Conjugate:	This Neurotrophin 4 antibody is un-conjugated
Application:	Western Blotting (WB), Immunohistochemistry (IHC)

Product Details

Immunogen:	Recombinant fusion protein of human NTF4 (NP_006170.1).
Isotype:	IgG
Characteristics:	Polyclonal Antibody
Purification:	Affinity purification

Target Details

Target:	Neurotrophin 4 (NTF4)
Alternative Name:	NTF4 (NTF4 Products)
Background:	This gene is a member of a family of neurotrophic factors, neurotrophins, that control survival and differentiation of mammalian neurons. The expression of this gene is ubiquitous and less influenced by environmental signals. While knock-outs of other neurotrophins including nerve growth factor, brain-derived neurotrophic factor, and neurotrophin 3 prove lethal during early

Target Details

postnatal development, NTF5-deficient mice only show minor cellular deficits and develop normally to adulthood.

Molecular Weight: Observed_MW: 22 kDa
Calculated_MW: 22 kDa

Gene ID: 4909

UniProt: [P34130](#)

Pathways: [RTK Signaling](#)

Application Details

Application Notes: WB 1:500-1:2000 IHC 1:100-1:200

Restrictions: For Research Use only

Handling

Format: Liquid

Concentration: 1 mg/mL

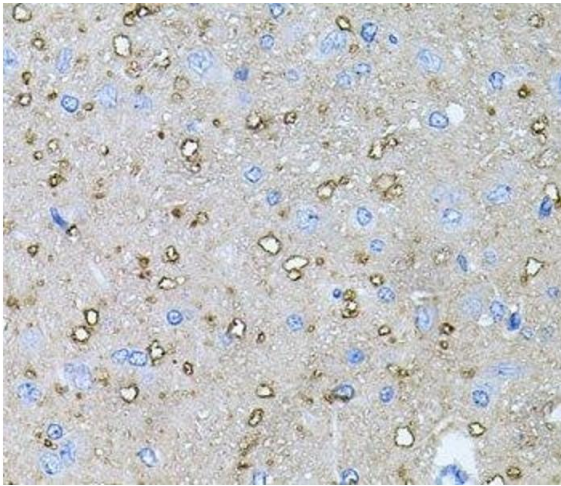
Buffer: PBS with 0.02 % sodium azide, 50 % glycerol, pH 7.3

Preservative: Sodium azide

Precaution of Use: This product contains Sodium azide: a POISONOUS AND HAZARDOUS SUBSTANCE which should be handled by trained staff only.

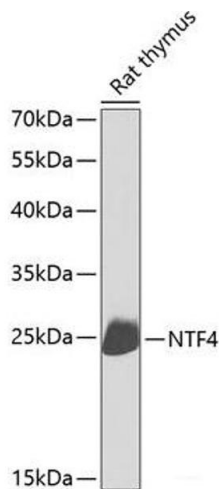
Storage: -20 °C

Storage Comment: Store at -20°C. Avoid freeze / thaw cycles.



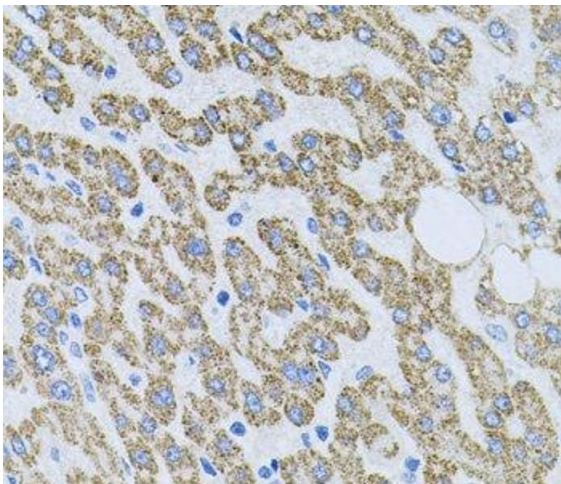
Immunohistochemistry (Paraffin-embedded Sections)

Image 1. Immunohistochemistry of paraffin-embedded Rat brain using NTF4 Polyclonal Antibody at dilution of 1:100 (40x lens).



Western Blotting

Image 2. Western blot analysis of extracts of Rat thymus using NTF4 Polyclonal Antibody at dilution of 1:1000.



Immunohistochemistry (Paraffin-embedded Sections)

Image 3. Immunohistochemistry of paraffin-embedded Human liver tissue using NTF4 Polyclonal Antibody at dilution of 1:100 (40x lens).