

Datasheet for ABIN7255445
anti-IL22 Receptor alpha 1 antibody[Go to Product page](#)

1 Image

Overview

Quantity:	200 µL
Target:	IL22 Receptor alpha 1 (IL22RA1)
Reactivity:	Human
Host:	Rabbit
Clonality:	Polyclonal
Conjugate:	This IL22 Receptor alpha 1 antibody is un-conjugated
Application:	Western Blotting (WB)

Product Details

Immunogen:	A synthetic peptide of human IL22RA1
Isotype:	IgG
Characteristics:	Polyclonal Antibody
Purification:	Affinity purification

Target Details

Target:	IL22 Receptor alpha 1 (IL22RA1)
Alternative Name:	IL22RA1 (IL22RA1 Products)
Background:	The protein encoded by this gene belongs to the class II cytokine receptor family, and has been shown to be a receptor for interleukin 22 (IL22). IL22 receptor is a protein complex that consists of this protein and interleukin 10 receptor, beta (IL10BR/CRFB4), a subunit also shared by the receptor complex for interleukin 10 (IL10). This gene and interleukin 28 receptor, alpha (IL28RA)

Target Details

form a cytokine receptor gene cluster in the chromosomal region 1p36.

Molecular Weight: Observed_MW: 80 kDa
Calculated_MW: 63 kDa

Gene ID: 58985

UniProt: [Q8N6P7](#)

Application Details

Application Notes: WB 1:500-1:1000

Restrictions: For Research Use only

Handling

Format: Liquid

Concentration: 1 mg/mL

Buffer: PBS with 0.02 % sodium azide, 50 % glycerol, pH 7.3

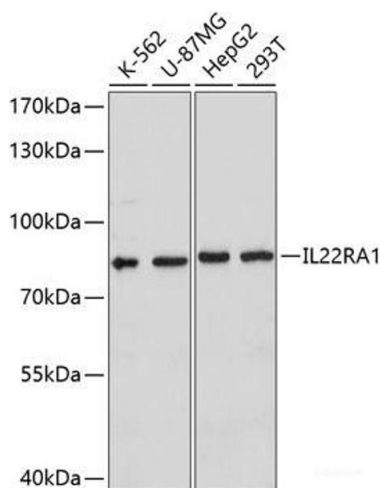
Preservative: Sodium azide

Precaution of Use: This product contains Sodium azide: a POISONOUS AND HAZARDOUS SUBSTANCE which should be handled by trained staff only.

Storage: -20 °C

Storage Comment: Store at -20°C. Avoid freeze / thaw cycles.

Images



Western Blotting

Image 1. Western blot analysis of extracts of various cell lines using IL22RA1 Polyclonal Antibody at dilution of 1:1000.