



[Go to Product page](#)

Datasheet for ABIN7255448

## anti-RNF166 antibody

### 1 Image

#### Overview

Quantity:	200 µL
Target:	RNF166
Reactivity:	Human, Mouse
Host:	Rabbit
Clonality:	Polyclonal
Conjugate:	This RNF166 antibody is un-conjugated
Application:	Western Blotting (WB)

#### Product Details

Immunogen:	A synthetic peptide of human RNF166
Isotype:	IgG
Characteristics:	Polyclonal Antibody
Purification:	Affinity purification

#### Target Details

Target:	RNF166
Alternative Name:	RNF166 ( <a href="#">RNF166 Products</a> )
Background:	RNF166 (Ring Finger Protein 166) is a Protein Coding gene. Diseases associated with RNF166 include Generalized Epilepsy With Febrile Seizures Plus, Type 9 and Myopathy, Congenital, Compton-North. An important paralog of this gene is RNF114.

## Target Details

Molecular Weight:	Observed_MW: 26 kDa Calculated_MW: 14 kDa/17 kDa/26 kDa
Gene ID:	115992
UniProt:	<a href="#">Q96A37</a>

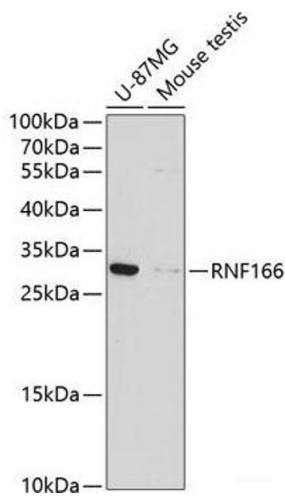
## Application Details

Application Notes:	WB 1:500-1:1000
Restrictions:	For Research Use only

## Handling

Format:	Liquid
Concentration:	1 mg/mL
Buffer:	PBS with 0.02 % sodium azide, 50 % glycerol, pH 7.3
Preservative:	Sodium azide
Precaution of Use:	This product contains Sodium azide: a POISONOUS AND HAZARDOUS SUBSTANCE which should be handled by trained staff only.
Storage:	-20 °C
Storage Comment:	Store at -20°C. Avoid freeze / thaw cycles.

## Images



### Western Blotting

**Image 1.** Western blot analysis of extracts of various cell lines using RNF166 Polyclonal Antibody at dilution of 1:1000.