

Datasheet for ABIN7255486

anti-Metabotropic Glutamate Receptor 1 antibody[Go to Product page](#)**1** Image

Overview

Quantity:	200 µL
Target:	Metabotropic Glutamate Receptor 1 (GRM1)
Reactivity:	Rat
Host:	Rabbit
Clonality:	Polyclonal
Conjugate:	This Metabotropic Glutamate Receptor 1 antibody is un-conjugated
Application:	Western Blotting (WB)

Product Details

Immunogen:	Recombinant fusion protein of human GRM1 (NP_001264993.1).
Isotype:	IgG
Characteristics:	Polyclonal Antibody
Purification:	Affinity purification

Target Details

Target:	Metabotropic Glutamate Receptor 1 (GRM1)
Alternative Name:	GRM1 (GRM1 Products)
Background:	This gene encodes a metabotropic glutamate receptor that functions by activating phospholipase C. L-glutamate is the major excitatory neurotransmitter in the central nervous system and activates both ionotropic and metabotropic glutamate receptors. Glutamatergic neurotransmission is involved in most aspects of normal brain function and can be perturbed in

Target Details

many neuropathologic conditions. The canonical alpha isoform of the encoded protein is a disulfide-linked homodimer whose activity is mediated by a G-protein-coupled phosphatidylinositol-calcium second messenger system. This gene may be associated with many disease states, including schizophrenia, bipolar disorder, depression, and breast cancer. Alternative splicing results in multiple transcript variants encoding different isoforms.

Molecular Weight:	Observed_MW: 132 kDa Calculated_MW: 101 kDa/132 kDa
-------------------	--

Gene ID:	2911
----------	------

UniProt:	Q13255
----------	------------------------

Application Details

Application Notes:	WB 1:500-1:2000
--------------------	-----------------

Restrictions:	For Research Use only
---------------	-----------------------

Handling

Format:	Liquid
---------	--------

Concentration:	1 mg/mL
----------------	---------

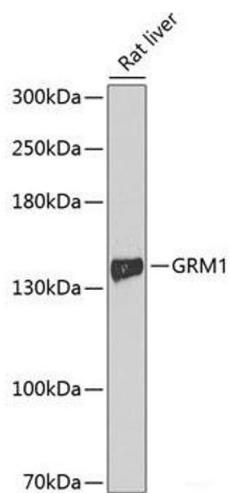
Buffer:	PBS with 0.02 % sodium azide, 50 % glycerol, pH 7.3
---------	---

Preservative:	Sodium azide
---------------	--------------

Precaution of Use:	This product contains Sodium azide: a POISONOUS AND HAZARDOUS SUBSTANCE which should be handled by trained staff only.
--------------------	--

Storage:	-20 °C
----------	--------

Storage Comment:	Store at -20°C. Avoid freeze / thaw cycles.
------------------	---



Western Blotting

Image 1. Western blot analysis of extracts of Rat liver using GRM1 Polyclonal Antibody at dilution of 1:1000.