

## Datasheet for ABIN7255504 **anti-Lipocalin 2 antibody**

### 2 Images



[Go to Product page](#)

### Overview

Quantity:	200 µL
Target:	Lipocalin 2 (LCN2)
Reactivity:	Human, Mouse, Rat
Host:	Rabbit
Clonality:	Polyclonal
Conjugate:	This Lipocalin 2 antibody is un-conjugated
Application:	Western Blotting (WB), Immunofluorescence (IF)

### Product Details

Immunogen:	Recombinant protein of human LCN2
Isotype:	IgG
Characteristics:	Polyclonal Antibody
Purification:	Affinity purification

### Target Details

Target:	Lipocalin 2 (LCN2)
Alternative Name:	LCN2 ( <a href="#">LCN2 Products</a> )
Background:	This gene encodes a protein that belongs to the lipocalin family. Members of this family transport small hydrophobic molecules such as lipids, steroid hormones and retinoids. The protein encoded by this gene is a neutrophil gelatinase-associated lipocalin and plays a role in innate immunity by limiting bacterial growth as a result of sequestering iron-containing

## Target Details

---

siderophores. The presence of this protein in blood and urine is an early biomarker of acute kidney injury. This protein is thought to be involved in multiple cellular processes, including maintenance of skin homeostasis, and suppression of invasiveness and metastasis. Mice lacking this gene are more susceptible to bacterial infection than wild type mice.

Molecular Weight: Observed\_MW: 23 kDa  
Calculated\_MW: 22 kDa

Gene ID: 3934

UniProt: [P80188](#)

Pathways: [Cellular Response to Molecule of Bacterial Origin](#), [Transition Metal Ion Homeostasis](#)

## Application Details

---

Application Notes: WB 1:500-1:2000 IF 1:10-1:100

Restrictions: For Research Use only

## Handling

---

Format: Liquid

Concentration: 1 mg/mL

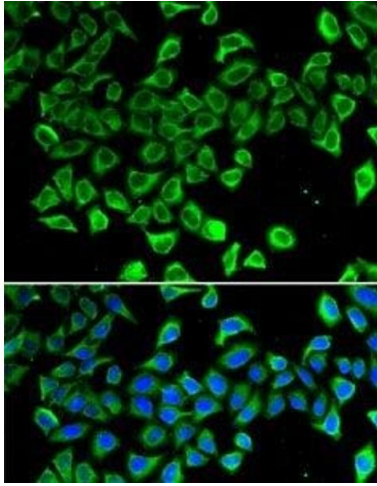
Buffer: PBS with 0.02 % sodium azide, 50 % glycerol, pH 7.3

Preservative: Sodium azide

Precaution of Use: This product contains Sodium azide: a POISONOUS AND HAZARDOUS SUBSTANCE which should be handled by trained staff only.

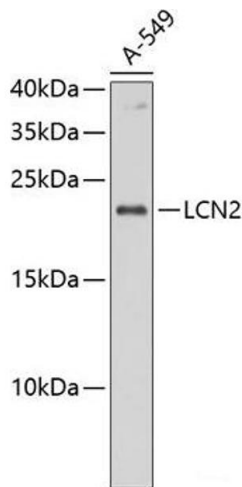
Storage: -20 °C

Storage Comment: Store at -20°C. Avoid freeze / thaw cycles.



### Immunofluorescence

**Image 1.** Immunofluorescence analysis of A-549 cells using LCN2 Polyclonal Antibody



### Western Blotting

**Image 2.** Western blot analysis of extracts of A-549 cells using LCN2 Polyclonal Antibody at dilution of 1:1000.