

Datasheet for ABIN7255512

anti-COX2 antibody

2 Images

[Go to Product page](#)

Overview

Quantity:	200 µL
Target:	COX2
Reactivity:	Human, Mouse, Rat
Host:	Rabbit
Clonality:	Polyclonal
Conjugate:	This COX2 antibody is un-conjugated
Application:	Western Blotting (WB), Immunofluorescence (IF)

Product Details

Immunogen:	A synthetic peptide of mouse MTCO2 (NP_904331.1).
Isotype:	IgG
Characteristics:	Polyclonal Antibody
Purification:	Affinity purification

Target Details

Target:	COX2
Alternative Name:	MTCO2 (COX2 Products)
Background:	MT-CO2 (Mitochondrially Encoded Cytochrome C Oxidase II) is a Protein Coding gene. Diseases associated with MT-CO2 include Mitochondrial Complex Iv Deficiency and Mitochondrial Disorders. Among its related pathways are Regulation of Wnt-mediated beta catenin signaling and target gene transcription and Respiratory electron transport, ATP synthesis by

Target Details

chemiosmotic coupling, and heat production by uncoupling proteins.. Gene Ontology (GO) annotations related to this gene include oxidoreductase activity and cytochrome-c oxidase activity.

Molecular Weight: Observed_MW: 24 kDa
Calculated_MW: 25 kDa

Gene ID: 17709

UniProt: [P00405](#)

Pathways: [Brown Fat Cell Differentiation](#), [Positive Regulation of fat Cell Differentiation](#)

Application Details

Application Notes: WB 1:500-1:2000 IF 1:50-1:200

Restrictions: For Research Use only

Handling

Format: Liquid

Concentration: 1 mg/mL

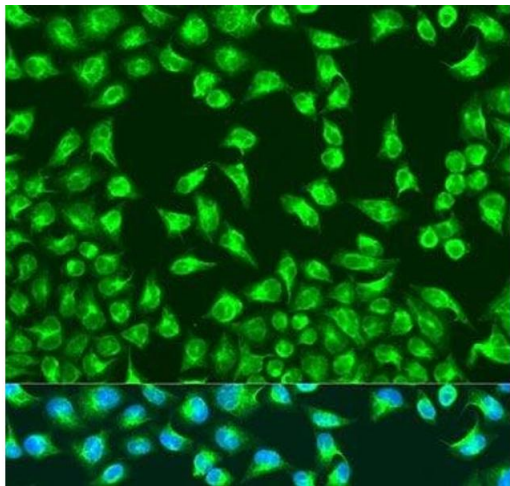
Buffer: PBS with 0.02 % sodium azide, 50 % glycerol, pH 7.3

Preservative: Sodium azide

Precaution of Use: This product contains Sodium azide: a POISONOUS AND HAZARDOUS SUBSTANCE which should be handled by trained staff only.

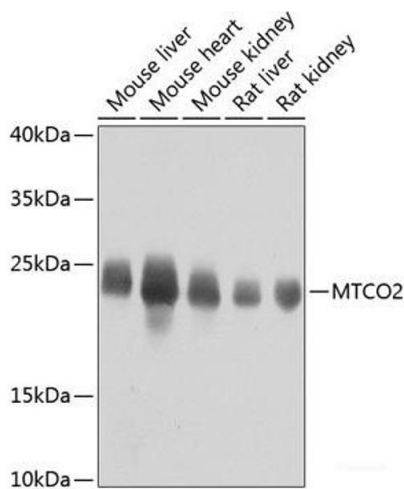
Storage: -20 °C

Storage Comment: Store at -20°C. Avoid freeze / thaw cycles.



Immunofluorescence

Image 1. Immunofluorescence analysis of U2OS cells using MTCO2 Polyclonal Antibody at dilution of 1:100. Blue: DAPI for nuclear staining.



Western Blotting

Image 2. Western blot analysis of extracts of various cell lines using MTCO2 Polyclonal Antibody at dilution of 1:800.