

Datasheet for ABIN7255580

anti-BMP4 antibody

2 Images

[Go to Product page](#)

Overview

Quantity:	200 µL
Target:	BMP4
Reactivity:	Human, Rat, Mouse
Host:	Rabbit
Clonality:	Polyclonal
Conjugate:	This BMP4 antibody is un-conjugated
Application:	Immunohistochemistry (IHC)

Product Details

Immunogen:	Recombinant fusion protein of human BMP4 (NP_570912.2).
Isotype:	IgG
Characteristics:	Polyclonal Antibody
Purification:	Affinity purification

Target Details

Target:	BMP4
Alternative Name:	BMP4 (BMP4 Products)
Background:	<p>This gene encodes a secreted ligand of the TGF-beta (transforming growth factor-beta) superfamily of proteins. Ligands of this family bind various TGF-beta receptors leading to recruitment and activation of SMAD family transcription factors that regulate gene expression.</p> <p>The encoded preproprotein is proteolytically processed to generate each subunit of the</p>

Target Details

disulfide-linked homodimer. This protein regulates heart development and adipogenesis. Mutations in this gene are associated with orofacial cleft and microphthalmia in human patients. The encoded protein may also be involved in the pathology of multiple cardiovascular diseases and human cancers.

Gene ID: 652

UniProt: [P12644](#)

Pathways: [Steroid Hormone Mediated Signaling Pathway](#), [Regulation of Muscle Cell Differentiation](#), [Tube Formation](#), [Skeletal Muscle Fiber Development](#)

Application Details

Application Notes: IHC 1:50-1:200

Restrictions: For Research Use only

Handling

Format: Liquid

Concentration: 1 mg/mL

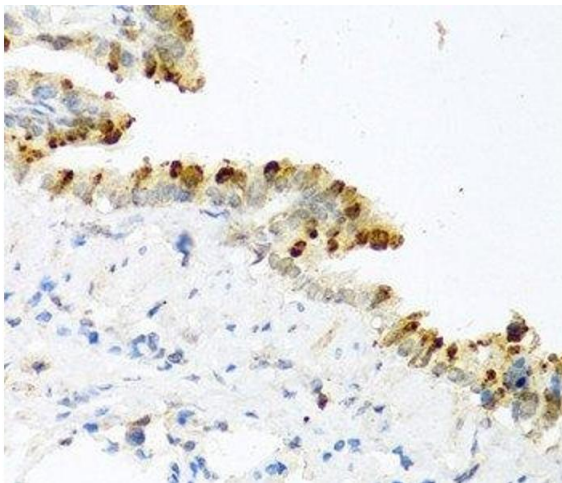
Buffer: PBS with 0.02 % sodium azide, 50 % glycerol, pH 7.3

Preservative: Sodium azide

Precaution of Use: This product contains Sodium azide: a POISONOUS AND HAZARDOUS SUBSTANCE which should be handled by trained staff only.

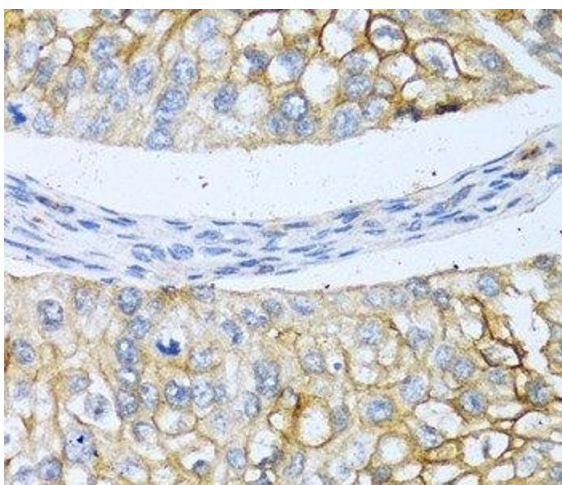
Storage: -20 °C

Storage Comment: Store at -20°C. Avoid freeze / thaw cycles.



Immunohistochemistry (Paraffin-embedded Sections)

Image 1. Immunohistochemistry of paraffin-embedded Mouse lung using BMP4 Polyclonal Antibody at dilution of 1:100 (40x lens).



Immunohistochemistry (Paraffin-embedded Sections)

Image 2. Immunohistochemistry of paraffin-embedded Human prostate cancer using BMP4 Polyclonal Antibody at dilution of 1:100 (40x lens).