

Datasheet for ABIN7255686

**anti-RSU1 antibody**[Go to Product page](#)**1** Image

## Overview

Quantity:	200 µL
Target:	RSU1
Reactivity:	Human, Mouse, Rat
Host:	Rabbit
Clonality:	Polyclonal
Conjugate:	This RSU1 antibody is un-conjugated
Application:	Western Blotting (WB)

## Product Details

Immunogen:	Recombinant fusion protein of human RSU1 (NP_036557.1).
Isotype:	IgG
Characteristics:	Polyclonal Antibody
Purification:	Affinity purification

## Target Details

Target:	RSU1
Alternative Name:	RSU1 ( <a href="#">RSU1 Products</a> )
Background:	This gene encodes a protein that is involved in the Ras signal transduction pathway, growth inhibition, and nerve-growth factor induced differentiation processes, as determined in mouse and human cell line studies. In mouse, the encoded protein was initially isolated based on its ability to inhibit v-Ras transformation. Multiple alternatively spliced transcript variants for this

## Target Details

gene have been reported, one of these variants was found only in glioma tumors.

Molecular Weight: Observed\_MW: 31 kDa  
Calculated\_MW: 25 kDa/31 kDa

Gene ID: 6251

UniProt: [Q15404](#)

## Application Details

Application Notes: WB 1:500-1:2000

Restrictions: For Research Use only

## Handling

Format: Liquid

Concentration: 1 mg/mL

Buffer: PBS with 0.02 % sodium azide, 50 % glycerol, pH 7.3

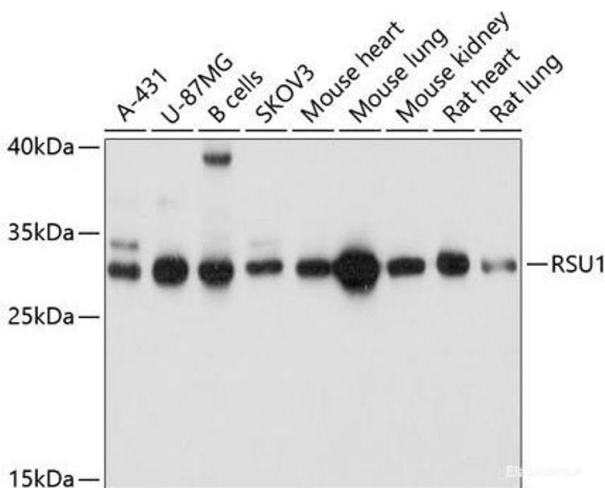
Preservative: Sodium azide

Precaution of Use: This product contains Sodium azide: a POISONOUS AND HAZARDOUS SUBSTANCE which should be handled by trained staff only.

Storage: -20 °C

Storage Comment: Store at -20°C. Avoid freeze / thaw cycles.

## Images



### Western Blotting

**Image 1.** Western blot analysis of extracts of various cell lines using RSU1 Polyclonal Antibody at dilution of 1:1000.