



[Go to Product page](#)

Datasheet for ABIN7255696
anti-Calmodulin 3 antibody

3 Images

Overview

Quantity:	200 µL
Target:	Calmodulin 3 (CALM3)
Reactivity:	Human, Rat, Mouse
Host:	Rabbit
Clonality:	Polyclonal
Conjugate:	This Calmodulin 3 antibody is un-conjugated
Application:	Western Blotting (WB), Immunohistochemistry (IHC), Immunofluorescence (IF)

Product Details

Immunogen:	A synthetic peptide of human CALM3 (NP_005175.2).
Isotype:	IgG
Characteristics:	Polyclonal Antibody
Purification:	Affinity purification

Target Details

Target:	Calmodulin 3 (CALM3)
Alternative Name:	CALM3 (CALM3 Products)
Background:	This gene encodes a member of a family of proteins that binds calcium and functions as a enzymatic co-factor. Activity of this protein is important in the regulation of the cell cycle and cytokinesis. Multiple alternatively spliced transcript variants have been observed at this gene.

Target Details

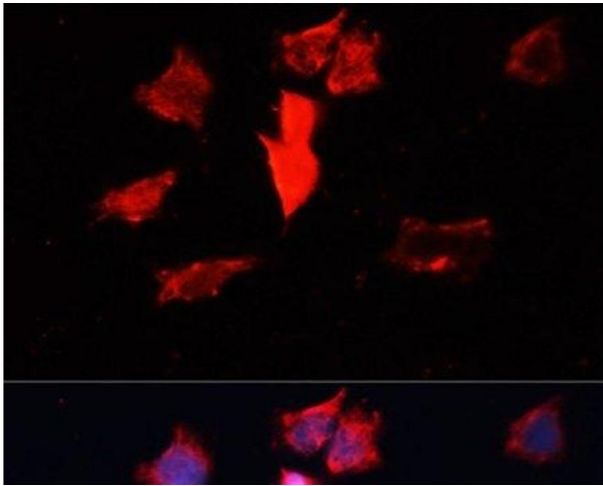
Molecular Weight:	Observed_MW: 17 kDa Calculated_MW: 17 kDa
Gene ID:	808
UniProt:	P62158
Pathways:	RTK Signaling , Interferon-gamma Pathway , Fc-epsilon Receptor Signaling Pathway , cAMP Metabolic Process , Myometrial Relaxation and Contraction , Cellular Glucan Metabolic Process , Regulation of G-Protein Coupled Receptor Protein Signaling , G-protein mediated Events , Signaling Events mediated by VEGFR1 and VEGFR2 , Interaction of EGFR with phospholipase C-gamma , Phototransduction , Negative Regulation of Transporter Activity , VEGFR1 Specific Signals , BCR Signaling

Application Details

Application Notes:	WB 1:500-1:2000 IHC 1:50-1:100 IF 1:50-1:100
Restrictions:	For Research Use only

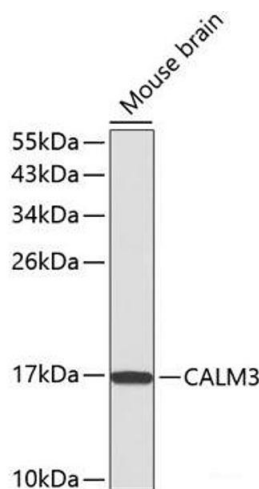
Handling

Format:	Liquid
Concentration:	1 mg/mL
Buffer:	PBS with 0.02 % sodium azide, 50 % glycerol, pH 7.3
Preservative:	Sodium azide
Precaution of Use:	This product contains Sodium azide: a POISONOUS AND HAZARDOUS SUBSTANCE which should be handled by trained staff only.
Storage:	-20 °C
Storage Comment:	Store at -20°C. Avoid freeze / thaw cycles.



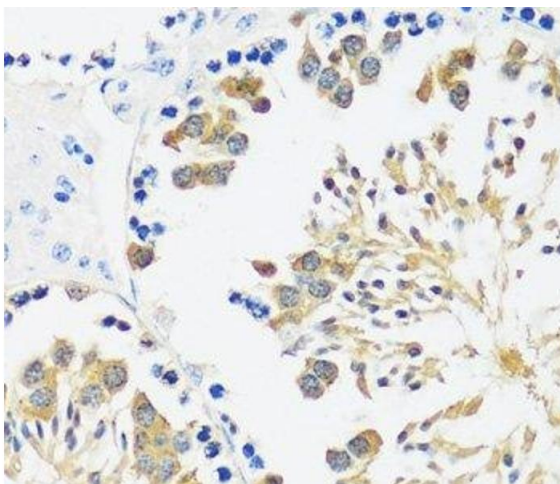
Immunofluorescence

Image 1. Immunofluorescence analysis of HeLa cells using CALM3 Polyclonal Antibody at dilution of 1:100. Blue: DAPI for nuclear staining.



Western Blotting

Image 2. Western blot analysis of extracts of Mouse brain using CALM3 Polyclonal Antibody.



Immunohistochemistry (Paraffin-embedded Sections)

Image 3. Immunohistochemistry of paraffin-embedded Mouse testis using CALM3 Polyclonal Antibody at dilution of 1:100 (40x lens).