



## Datasheet for ABIN7255710 anti-RAB2A antibody



[Go to Product page](#)

### 1 Image

#### Overview

Quantity:	200 µL
Target:	RAB2A
Reactivity:	Human, Mouse, Rat
Host:	Rabbit
Clonality:	Polyclonal
Conjugate:	This RAB2A antibody is un-conjugated
Application:	Western Blotting (WB)

#### Product Details

Immunogen:	Recombinant fusion protein of human RAB2A (NP_002856.1).
Isotype:	IgG
Characteristics:	Polyclonal Antibody
Purification:	Affinity purification

#### Target Details

Target:	RAB2A
Alternative Name:	RAB2A ( <a href="#">RAB2A Products</a> )
Background:	The protein encoded by this gene belongs to the Rab family, members of which are small molecular weight guanosine triphosphatases (GTPases) that contain highly conserved domains involved in GTP binding and hydrolysis. The Rabs are membrane-bound proteins, involved in vesicular fusion and trafficking. This protein is a resident of pre-Golgi intermediates, and is

## Target Details

---

required for protein transport from the endoplasmic reticulum (ER) to the Golgi complex.  
Alternatively spliced transcript variants encoding different isoforms have been found for this gene.

Molecular Weight: Observed\_MW: 24 kDa  
Calculated\_MW: 20 kDa/23 kDa

Gene ID: 5862

UniProt: [P61019](#)

Pathways: [SARS-CoV-2 Protein Interactome](#)

## Application Details

---

Application Notes: WB 1:500-1:2000

Restrictions: For Research Use only

## Handling

---

Format: Liquid

Concentration: 1 mg/mL

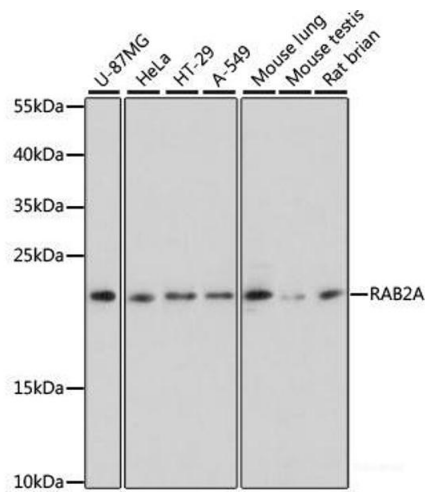
Buffer: PBS with 0.02 % sodium azide, 50 % glycerol, pH 7.3

Preservative: Sodium azide

Precaution of Use: This product contains Sodium azide: a POISONOUS AND HAZARDOUS SUBSTANCE which should be handled by trained staff only.

Storage: -20 °C

Storage Comment: Store at -20°C. Avoid freeze / thaw cycles.



### Western Blotting

**Image 1.** Western blot analysis of extracts of various cell lines using RAB2A Polyclonal Antibody at dilution of 1:3000.