

Datasheet for ABIN7255716

anti-CSTF3 antibody**1** Image[Go to Product page](#)

Overview

Quantity:	200 µL
Target:	CSTF3
Reactivity:	Human, Mouse, Rat
Host:	Rabbit
Clonality:	Polyclonal
Conjugate:	This CSTF3 antibody is un-conjugated
Application:	Western Blotting (WB)

Product Details

Immunogen:	Recombinant fusion protein of human CSTF3 (NP_001028677.1).
Isotype:	IgG
Characteristics:	Polyclonal Antibody
Purification:	Affinity purification

Target Details

Target:	CSTF3
Alternative Name:	CSTF3 (CSTF3 Products)
Background:	The protein encoded by this gene is one of three (including CSTF1 and CSTF2) cleavage stimulation factors that combine to form the cleavage stimulation factor complex (CSTF). This complex is involved in the polyadenylation and 3' end cleavage of pre-mRNAs. The encoded protein functions as a homodimer and interacts directly with both CSTF1 and CSTF2 in the

Target Details

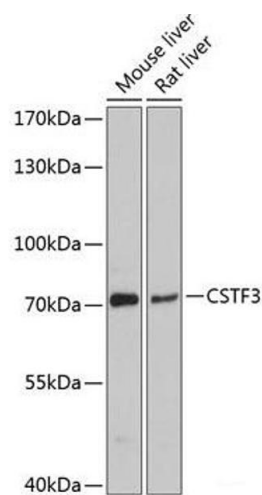
	CSTF complex. Alternative splicing results in multiple transcript variants encoding different isoforms.
Molecular Weight:	Observed_MW: 77 kDa Calculated_MW: 4 kDa/12 kDa/82 kDa
Gene ID:	1479
UniProt:	Q12996

Application Details

Application Notes:	WB 1:500-1:2000
Restrictions:	For Research Use only

Handling

Format:	Liquid
Concentration:	1 mg/mL
Buffer:	PBS with 0.02 % sodium azide, 50 % glycerol, pH 7.3
Preservative:	Sodium azide
Precaution of Use:	This product contains Sodium azide: a POISONOUS AND HAZARDOUS SUBSTANCE which should be handled by trained staff only.
Storage:	-20 °C
Storage Comment:	Store at -20°C. Avoid freeze / thaw cycles.



Western Blotting

Image 1. Western blot analysis of extracts of various cell lines using CSTF3 Polyclonal Antibody at dilution of 1:3000.