

## Datasheet for ABIN7255718 **anti-RAB11A antibody**



[Go to Product page](#)

### 1 Image

#### Overview

Quantity:	200 µL
Target:	RAB11A
Reactivity:	Human, Rat
Host:	Rabbit
Clonality:	Polyclonal
Conjugate:	This RAB11A antibody is un-conjugated
Application:	Immunofluorescence (IF)

#### Product Details

Immunogen:	Recombinant fusion protein of human RAB11A (NP_004654.1).
Isotype:	IgG
Characteristics:	Polyclonal Antibody
Purification:	Affinity purification

#### Target Details

Target:	RAB11A
Alternative Name:	RAB11A ( <a href="#">RAB11A Products</a> )
Background:	The protein encoded by this gene belongs to the Rab family of the small GTPase superfamily. It is associated with both constitutive and regulated secretory pathways, and may be involved in protein transport. Two transcript variants encoding different isoforms have been found for this gene.

## Target Details

Gene ID:	8766
UniProt:	<a href="#">P62491</a>
Pathways:	<a href="#">Regulation of Cell Size</a> , <a href="#">Thromboxane A2 Receptor Signaling</a> , <a href="#">Regulation of long-term Neuronal Synaptic Plasticity</a>

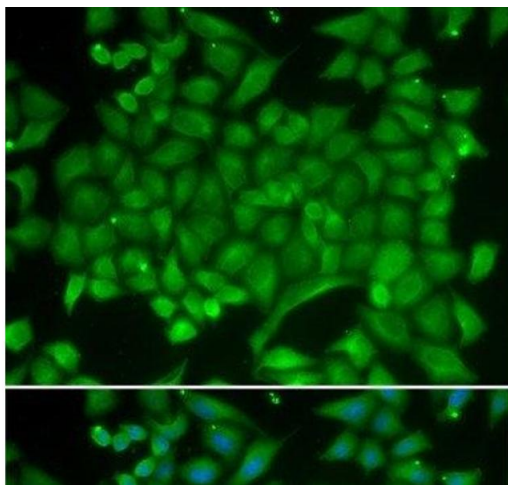
## Application Details

Application Notes:	IF 1:50-1:200
Restrictions:	For Research Use only

## Handling

Format:	Liquid
Concentration:	1 mg/mL
Buffer:	PBS with 0.02 % sodium azide, 50 % glycerol, pH 7.3
Preservative:	Sodium azide
Precaution of Use:	This product contains Sodium azide: a POISONOUS AND HAZARDOUS SUBSTANCE which should be handled by trained staff only.
Storage:	-20 °C
Storage Comment:	Store at -20°C. Avoid freeze / thaw cycles.

## Images



### Immunofluorescence

**Image 1.** Immunofluorescence analysis of MCF-7 cells using RAB11A Polyclonal Antibody