

Datasheet for ABIN7255728  
**anti-SLC25A12 antibody**[Go to Product page](#)

## 1 Image

## Overview

Quantity:	200 µL
Target:	SLC25A12 (Slc25a12)
Reactivity:	Human, Mouse, Rat
Host:	Rabbit
Clonality:	Polyclonal
Conjugate:	This SLC25A12 antibody is un-conjugated
Application:	Western Blotting (WB)

## Product Details

Immunogen:	Recombinant fusion protein of human SLC25A12 (NP_003696.2).
Isotype:	IgG
Characteristics:	Polyclonal Antibody
Purification:	Affinity purification

## Target Details

Target:	SLC25A12 (Slc25a12)
Alternative Name:	SLC25A12 ( <a href="#">Slc25a12 Products</a> )
Background:	This gene encodes a calcium-binding mitochondrial carrier protein. The encoded protein localizes to the mitochondria and is involved in the exchange of aspartate for glutamate across the inner mitochondrial membrane. Polymorphisms in this gene may be associated with autism, and mutations in this gene may also be a cause of global cerebral hypomyelination.

## Target Details

Alternatively spliced transcript variants have been observed for this gene.

Molecular Weight: Observed\_MW: 75 kDa  
Calculated\_MW: 62 kDa/74 kDa

Gene ID: 8604

UniProt: [O75746](#)

Pathways: [Ribonucleoside Biosynthetic Process](#), [Dicarboxylic Acid Transport](#)

## Application Details

Application Notes: WB 1:500-1:2000

Restrictions: For Research Use only

## Handling

Format: Liquid

Concentration: 1 mg/mL

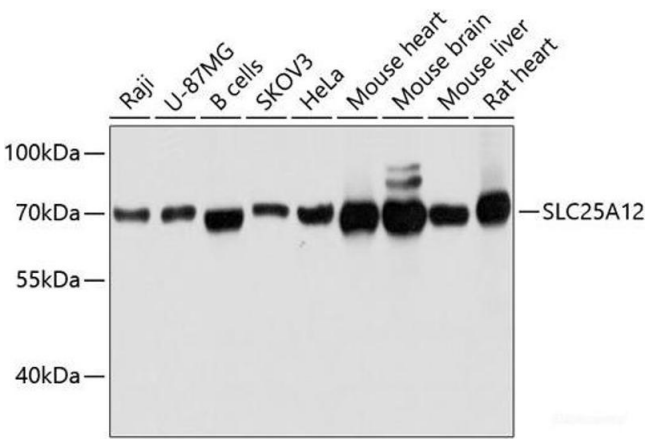
Buffer: PBS with 0.02 % sodium azide, 50 % glycerol, pH 7.3

Preservative: Sodium azide

Precaution of Use: This product contains Sodium azide: a POISONOUS AND HAZARDOUS SUBSTANCE which should be handled by trained staff only.

Storage: -20 °C

Storage Comment: Store at -20°C. Avoid freeze / thaw cycles.



Western Blotting

**Image 1.** Western blot analysis of extracts of various cell lines using SLC25A12 Polyclonal Antibody at dilution of 1:3000.