

Datasheet for ABIN7255734

**anti-PYCARD antibody****2** Images[Go to Product page](#)

## Overview

Quantity:	200 µL
Target:	PYCARD
Reactivity:	Human, Mouse, Rat
Host:	Rabbit
Clonality:	Polyclonal
Conjugate:	This PYCARD antibody is un-conjugated
Application:	Western Blotting (WB), Immunofluorescence (IF)

## Product Details

Immunogen:	Recombinant fusion protein of human ASC / TMS1 (NP_037390.2).
Isotype:	IgG
Characteristics:	Polyclonal Antibody
Purification:	Affinity purification

## Target Details

Target:	PYCARD
Alternative Name:	ASC / TMS1 ( <a href="#">PYCARD Products</a> )
Background:	This gene encodes an adaptor protein that is composed of two protein-protein interaction domains: a N-terminal PYRIN-PAAD-DAPIN domain (PYD) and a C-terminal caspase-recruitment domain (CARD). The PYD and CARD domains are members of the six-helix bundle death domain-fold superfamily that mediates assembly of large signaling complexes in the

## Target Details

inflammatory and apoptotic signaling pathways via the activation of caspase. In normal cells, this protein is localized to the cytoplasm, however, in cells undergoing apoptosis, it forms ball-like aggregates near the nuclear periphery. Two transcript variants encoding different isoforms have been found for this gene.

Molecular Weight: Observed\_MW: 22 kDa  
Calculated\_MW: 15 kDa/19 kDa/21 kDa

Gene ID: 29108

UniProt: [Q9ULZ3](#)

Pathways: [Activation of Innate immune Response](#), [Cellular Response to Molecule of Bacterial Origin](#), [Regulation of Actin Filament Polymerization](#), [Positive Regulation of Endopeptidase Activity](#), [Activated T Cell Proliferation](#), [Inflammasome](#)

## Application Details

Application Notes: WB 1:500-1:2000 IF 1:50-1:200

Restrictions: For Research Use only

## Handling

Format: Liquid

Concentration: 1 mg/mL

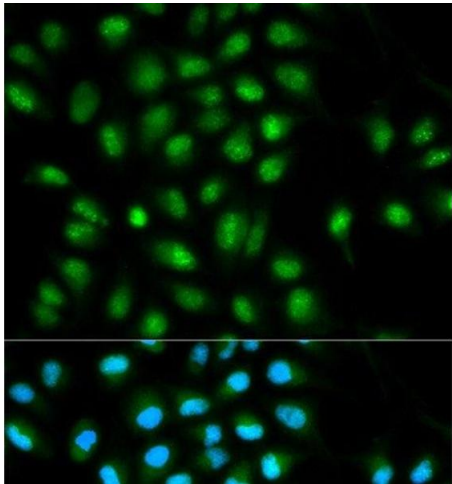
Buffer: PBS with 0.02 % sodium azide, 50 % glycerol, pH 7.3

Preservative: Sodium azide

Precaution of Use: This product contains Sodium azide: a POISONOUS AND HAZARDOUS SUBSTANCE which should be handled by trained staff only.

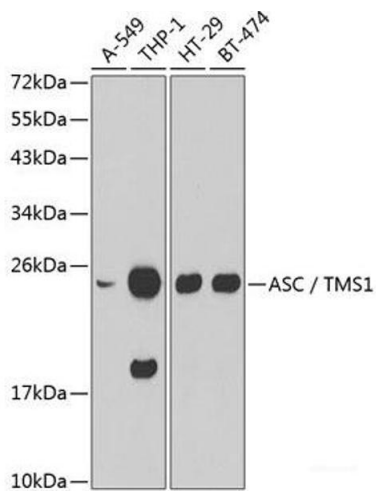
Storage: -20 °C

Storage Comment: Store at -20°C. Avoid freeze / thaw cycles.



Immunofluorescence

**Image 1.** Immunofluorescence analysis of HeLa cells using ASC / TMS1 Polyclonal Antibody



Western Blotting

**Image 2.** Western blot analysis of extracts of various cell lines using ASC / TMS1 Polyclonal Antibody.