



## Datasheet for ABIN7255754 anti-TRIM15 antibody



[Go to Product page](#)

### 3 Images

#### Overview

Quantity:	200 µL
Target:	TRIM15
Reactivity:	Human, Rat
Host:	Rabbit
Clonality:	Polyclonal
Conjugate:	This TRIM15 antibody is un-conjugated
Application:	Immunohistochemistry (IHC)

#### Product Details

Immunogen:	Recombinant fusion protein of human TRIM15 (NP_150232.2).
Isotype:	IgG
Characteristics:	Polyclonal Antibody
Purification:	Affinity purification

#### Target Details

Target:	TRIM15
Alternative Name:	TRIM15 ( <a href="#">TRIM15 Products</a> )
Background:	The protein encoded by this gene is a member of the tripartite motif (TRIM) family. The TRIM motif includes three zinc-binding domains, a RING, a B-box type 1 and a B-box type 2, and a coiled-coil region. The protein localizes to the cytoplasm. Alternatively spliced transcript variants have been described, but their biological validity has not been determined.

## Target Details

Gene ID: 89870

UniProt: [Q9C019](#)

## Application Details

Application Notes: IHC 1:50-1:200

Restrictions: For Research Use only

## Handling

Format: Liquid

Concentration: 1 mg/mL

Buffer: PBS with 0.02 % sodium azide, 50 % glycerol, pH 7.3

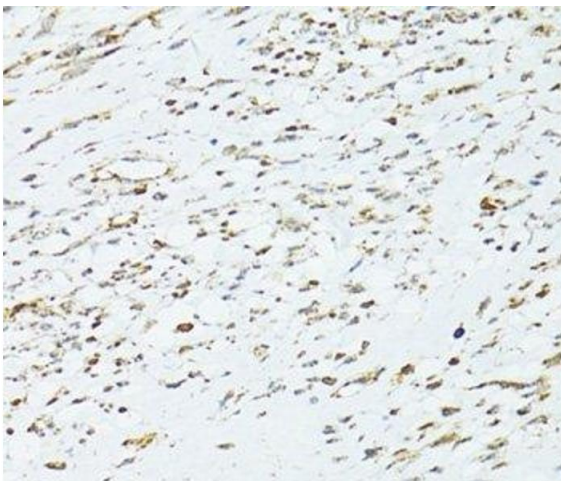
Preservative: Sodium azide

Precaution of Use: This product contains Sodium azide: a POISONOUS AND HAZARDOUS SUBSTANCE which should be handled by trained staff only.

Storage: -20 °C

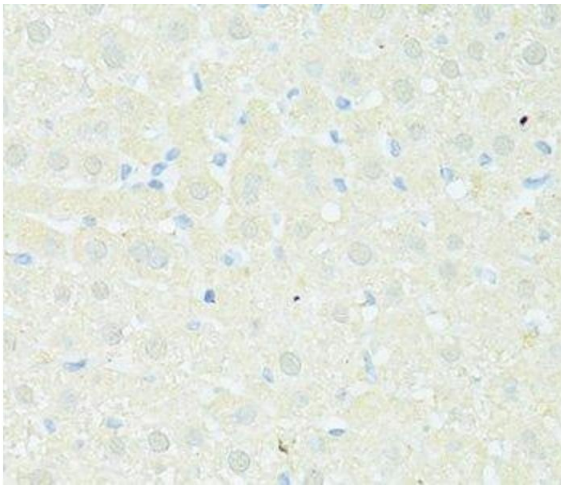
Storage Comment: Store at -20°C. Avoid freeze / thaw cycles.

## Images



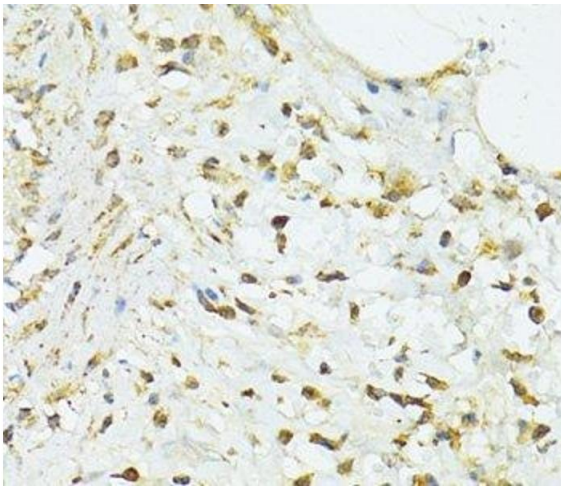
### Immunohistochemistry (Paraffin-embedded Sections)

**Image 1.** Immunohistochemistry of paraffin-embedded Human uterine cancer using TRIM15 Polyclonal Antibody at dilution of 1:100 (40x lens).



#### Immunohistochemistry (Paraffin-embedded Sections)

**Image 2.** Immunohistochemistry of paraffin-embedded Rat liver using TRIM15 Polyclonal Antibody at dilution of 1:100 (40x lens).



#### Immunohistochemistry (Paraffin-embedded Sections)

**Image 3.** Immunohistochemistry of paraffin-embedded Human vermiform appendix using TRIM15 Polyclonal Antibody at dilution of 1:100 (40x lens).