

Datasheet for ABIN7255758

anti-rala antibody

2 Images



[Go to Product page](#)

Overview

Quantity:	200 µL
Target:	rala
Reactivity:	Human, Mouse, Rat
Host:	Rabbit
Clonality:	Polyclonal
Conjugate:	This rala antibody is un-conjugated
Application:	Immunofluorescence (IF)

Product Details

Immunogen:	Recombinant fusion protein of human RALA (NP_005393.2).
Isotype:	IgG
Characteristics:	Polyclonal Antibody
Purification:	Affinity purification

Target Details

Target:	rala
Alternative Name:	RALA (rala Products)
Background:	The product of this gene belongs to the small GTPase superfamily, Ras family of proteins. GTP-binding proteins mediate the transmembrane signaling initiated by the occupancy of certain cell surface receptors. This gene encodes a low molecular mass ras-like GTP-binding protein that shares about 50 % similarity with other ras proteins.

Target Details

Gene ID:	5898
UniProt:	P11233
Pathways:	Neurotrophin Signaling Pathway , SARS-CoV-2 Protein Interactome

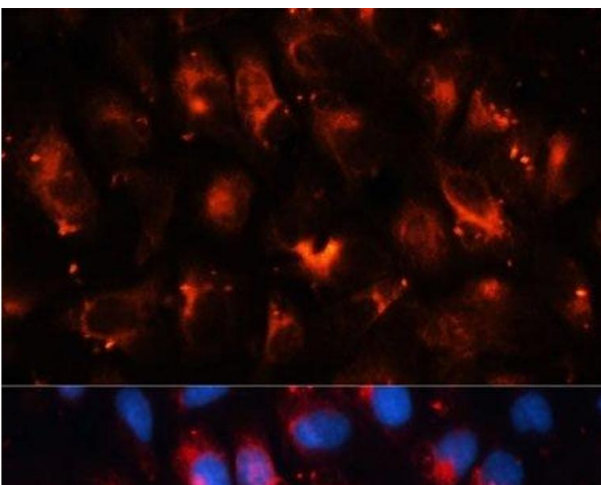
Application Details

Application Notes:	IF 1:50-1:200
Restrictions:	For Research Use only

Handling

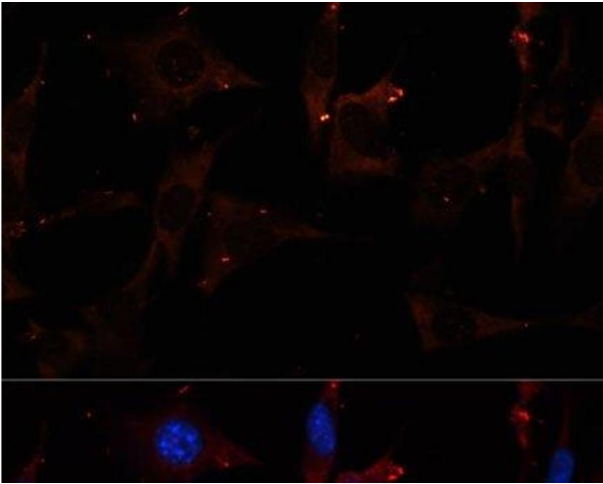
Format:	Liquid
Concentration:	1 mg/mL
Buffer:	PBS with 0.02 % sodium azide, 50 % glycerol, pH 7.3
Preservative:	Sodium azide
Precaution of Use:	This product contains Sodium azide: a POISONOUS AND HAZARDOUS SUBSTANCE which should be handled by trained staff only.
Storage:	-20 °C
Storage Comment:	Store at -20°C. Avoid freeze / thaw cycles.

Images



Immunofluorescence

Image 1. Immunofluorescence analysis of U-2OS cells using RALA Polyclonal Antibody at dilution of 1:100. Blue: DAPI for nuclear staining.



Immunofluorescence

Image 2. Immunofluorescence analysis of NIH/3T3 cells using RALA Polyclonal Antibody at dilution of 1:100. Blue: DAPI for nuclear staining.